



PRODUCT CATALOGUE-2025-2026



DEALS IN KITCHEN & WARDROBE HARDWARE



Laarmas products made in Spain are known for their high quality, innovative design, and modern functionality. Spanish brands have established a strong reputation in the global market for their craftsmanship and attention to detail. These products often feature cutting-edge designs, efficient use of space, and a sleek, contemporary aesthetic that suits a wide range of interiors. They also offer customization options to fit various spaces and client preferences. In addition to style and functionality, Spanish-made products emphasize ease of installation and long-term durability.

If you're looking for modular kitchen and wardrobe solutions,

LAARMAS
OFFERS
THE BEST
IN TERMS
OF BOTH
QUALITY
DESIGN &
INNOVATION.







ABOUT US

Greetings from the Laarmas family. Our team of service providers operates under the three fundamental criteria of “quality,” “affordability,” and “reliability,” which guarantees our dedication to providing our services.

Laarmas is a proponent of creating elegant home design. It should be mentioned that elegance entails emphasising simplicity. Our modular kitchen and wardrobe products provide a home fresh look while also giving our customers extra space. We guarantee that our customers will receive high-end quality products because they are made in Spain. Our goal is to create visually pleasing and clutter-free homes. Laarmas uses cutting-edge, stylish, and incredibly practical materials to emphasise the fundamental kitchen and wardrobe framework.

Beautiful kitchens and closets create room for good energy and enhance the whole ambiance. Since all of our items go through our ethical testing procedures before being installed, Laarmas promises to deliver products of the highest calibre. We never cut corners when it comes to the quality of our products. Because we exclusively purchase standard equipment that ensures great performance, Laarmas has established a reputation for dependability and wants to establish a worthy relationship with its customers.



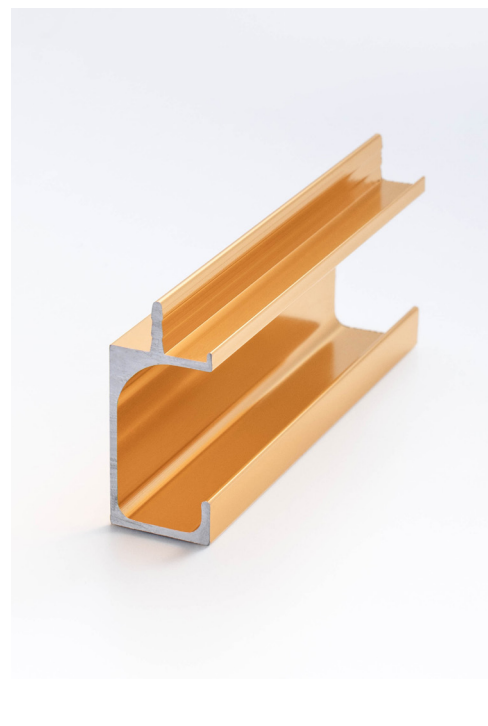
EMBRACE AFFORDABLE LUXURY & ENHANCING THE QUALITY OF YOUR LIFE

To come up with utmost quality products is the sole motto of our company, Laarmas. As we provide hardware and fitting systems, our product categories include kitchen and wardrobe hardware.

For Laarmas, the wardrobe & kitchen is an important place in the home – a place that strengthens familial bonds. And rightly so; we believe in turning your wardrobes & kitchens into a piece of art in terms of design, look-n-feel, aesthetics and charm. We are specialists who deliver products for various kinds of kitchen and wardrobe solutions to ideally suit the varying modern-day needs of homeowners. Laarmas inspires lives through our kitchen and wardrobe hardware that blends creativity and engineering expertise.









CONTENTS

Wardrobe Accessories	10
Wardrobe Sliding Mechanism	30
Door Alignment	40
Push-Pull Catcher	42
Aluminium Profiles	46
Exquisite Box	76
Storage Solution	84
Caddy	86
Kitchen Organiser	90
PVC Trays	102
Corner Units	108
Bottle Pull-outs	110
Pantry Units	112
Astute	114
Roller Shutter	116
Wastebins	118
Liquid Rack	121
Cabinet Skirting & Legs	122
Gas Spring	126
Bed Fitting	132
Dish Rack	134
EVA Anti slip mat	136
Hydraulic Hinge	138
Drawer Runner	152
Door Sliding	164
Magnet Door holder	168





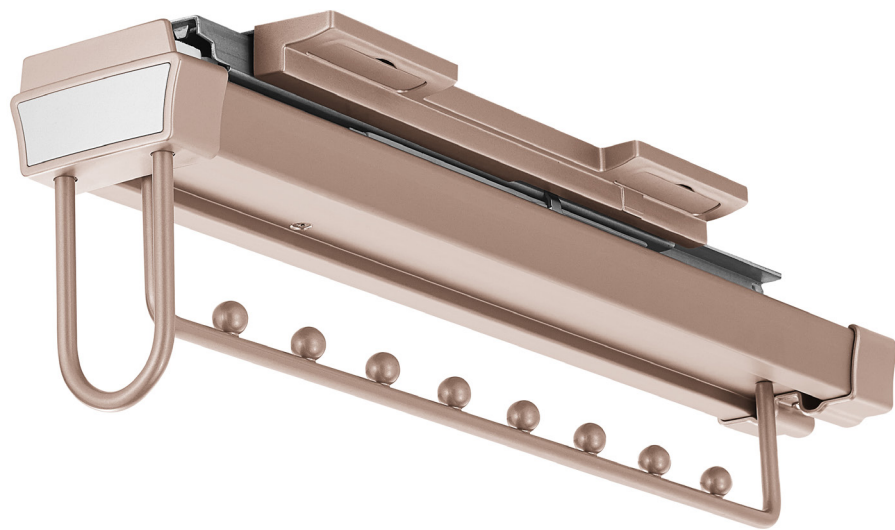
WARDROBE ACCESSORIES

Outstanding convenience, every day



The wardrobe accessories are space-saving. It gives our customers good organisation of the wardrobe and quick access to the stored stuff in the area. Laarmas provides exclusive design and quality manufacturing for the wardrobe accessories. The enormous functionality is perfect for individually configured wardrobes. These accessories include top install soft close cloth rack, top mounted double row trouser rack, soft close tie rack, mobile cloth hanger, soft closing trousers rack, classified storage shelf, rattan basket, glass slide basket, hanger pipe which ensures outstanding comfort.





LAWR - 021

TOP MOUNTED SOFT CLOSE CLOTH RACK

- The product is named a top-mounted soft-close cloth rack.
- The cloth rack is exclusively designed for hanging sarees, coats, etc.
- Suitable for hanging clothes with a damping guide rail; use smooth, stable and quiet.
- The holder includes soft closing for the undershelf, which allows the movement of the holder.
- Dimensions: W-1110mm, D-468mm and H-135mm.
- The high-end cloth rack can take the weight load of 15 kg.



LAWR - 022

TOP MOUNTED DOUBLE ROW TROUSER RACK

- The product is named a top-mounted double-row trouser rack.
- Suitable for storing items of clothing in large capacity.
- It makes each trouser stored appropriately.
- Smooth and silent motion with a soft-close Quadro slide gives a gentle and comfortable experience.
- The product is made up of quality material to ensure durability.
- Dimensions: W-610mm, D-468mm and H-135mm.









LAWR - 023

SOFT CLOSE TIE RACK

- The product is named a soft-close tie rack.
- The soft-close tie rack is exclusively designed for making each tie and belt stored separately.
- Smooth motion gives a gentle and comfortable experience.
- Stable overall structure with easy installation.
- The soft-close tie rack can take the weight load of 10 kg.
- Dimensions: W-140 mm, D-468 mm and H-70 mm.



LAWR - 024

MOBILE CLOTH HANGER

- The product is termed a mobile cloth hanger.
- It is a functional design draughted for up and down movements with adjustable width.
- Optional poles are available for higher installation.
- Ergonomic handle with reinforced T-bracket.
- Bumpers attached add protection while lowering the clothes bar.
- Spacers provide the optional distance between the back wall and the hangers.
- Width of wardrobe tube: 830-1150 mm.
- Width of inside wardrobe: 890-1210 mm.
- Weight load: 15 kg





LAWR - 025

SOFT - CLOSING TROUSERS RACK

- It is suitable for storing pants, towels, etc. With a damping guide rail, use smooth, stable, quiet.
- The frame structure can be a telescopic adjustment of 100 mm according to requirements and specifications of the wardrobes.
- It is a stable structure with easy installation.
- Dimensions: W-864mm, D-480mm and X H-75mm. Width of wardrobe tube: 830-1150 mm.
- Width of inside wardrobe: 890-1210 mm.
- Weight load: 15 kg









LAWR - 026

CLASSIFIED STORAGE SHELF

- It is suitable for storing accessories, rings, scarves, etc.
- It comes with a soft close damping guide rail
- The frame structure comes with telescopic adjustments which can be adjusted according to the size of the wardrobes.
- Dimensions: 864mm, 480mm and 80mm with inner width: 864mm - 964mm







LAWR - 027

RATTAN BASKET

- It is suitable for storing clothes, towels, trousers, etc.
- It comes with a soft-close damping guide rail.
- The stable structure comes with easy installation.
- Dimensions: 864mm, 480mm and 190mm with an inner width: 864mm - 964mm.





LAWR - 028

RATTAN BASKET

- It is suitable for storing clothes, towels, trousers, etc.
- It comes with a soft-close damping guide rail.
- The stable structure comes with easy installation.
- Dimensions: 864mm, 480mm and 165mm with inner width: 864mm - 964mm.







LAWR - 031

WARDROBE HANGER PIPE

- It is rectangular in shape and suitable for hanging clothes, trousers, etc.
 - It comes with a length of 3 metres.
 - It comes in a similar colour with a PVC sleeve
- Material used is aluminium and comes in colour – champagne gold and black.



LAWR - 032

SIDE BRACKETS

- Side brackets are used with LAWR-031.
- The material used is aluminium and comes in the colours champagne gold and black.

LAWR - 033

CENTER SUPPORT BRACKET

- The centre support brackets are used for long-length hanger pipes – LAWR-031.
- The material used is aluminium and comes in the colours champagne gold and black.

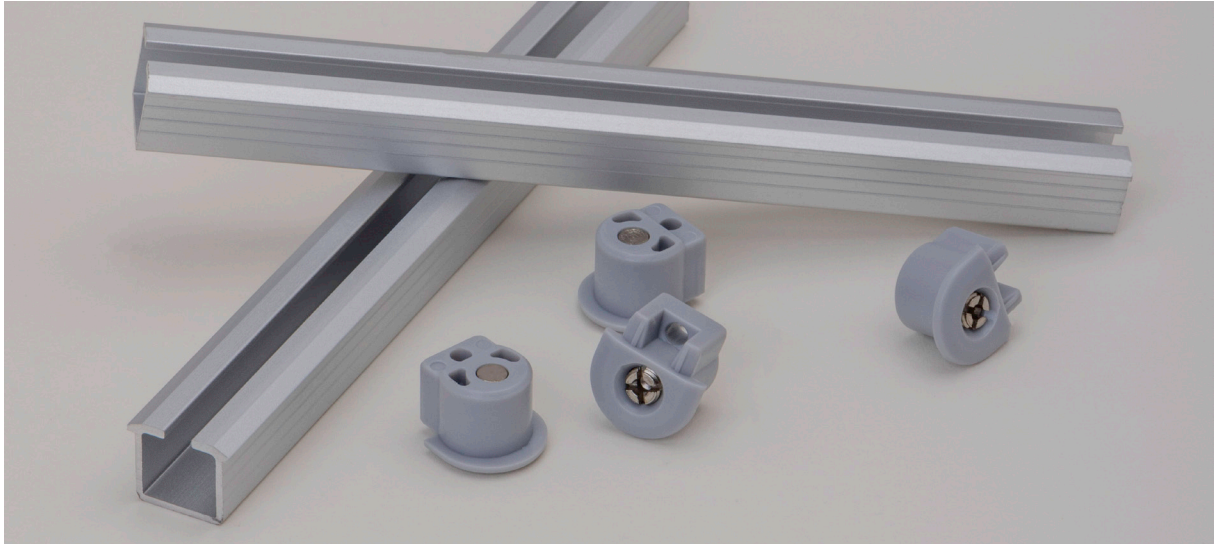


WARDROBE SLIDING MECHANISM

For unobstructed access

Running sliding doors for wardrobes has created an elegant frontage solution. Laarmas offers a wide range of innovative hardware systems for wardrobe sliding. In the bedroom and living room, sliding doors make the most of the storage space. Unobstructed access to the doors does not intrude into the room when they are open. These sliding doors move easily and quietly and also close gently with a silent system.



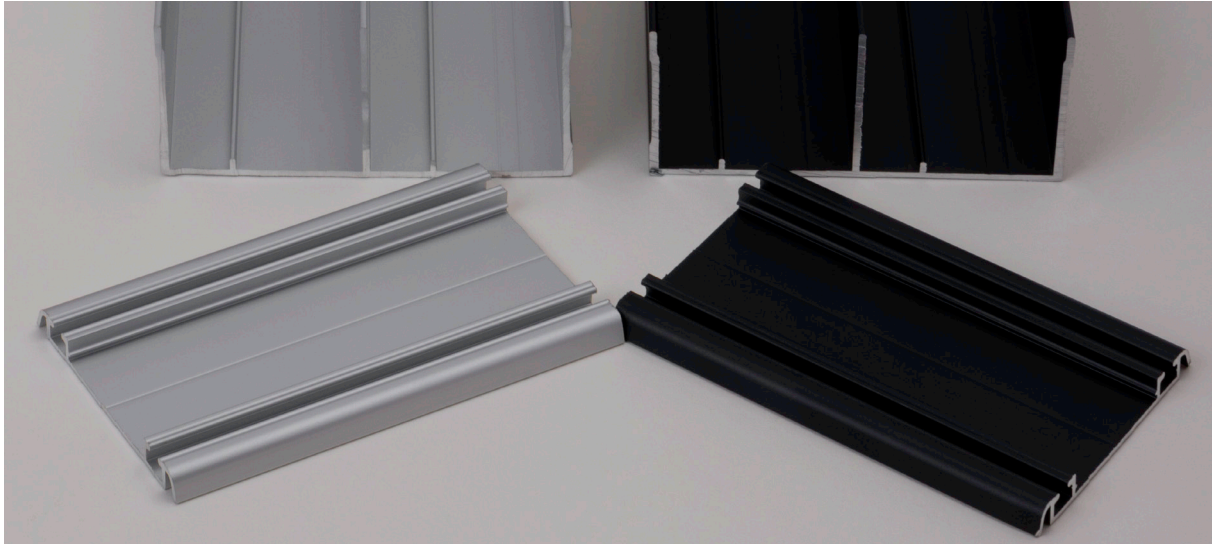


PRODUCT CODE	MATERIAL	SIZE	USED	FINISH
LAP 004	ALUMINIUM SLIDING PROFILE	2.5 MTR & 3.7 MTR	LAWR - 04	ANODISED ALUMINIUM



LAWR - 04

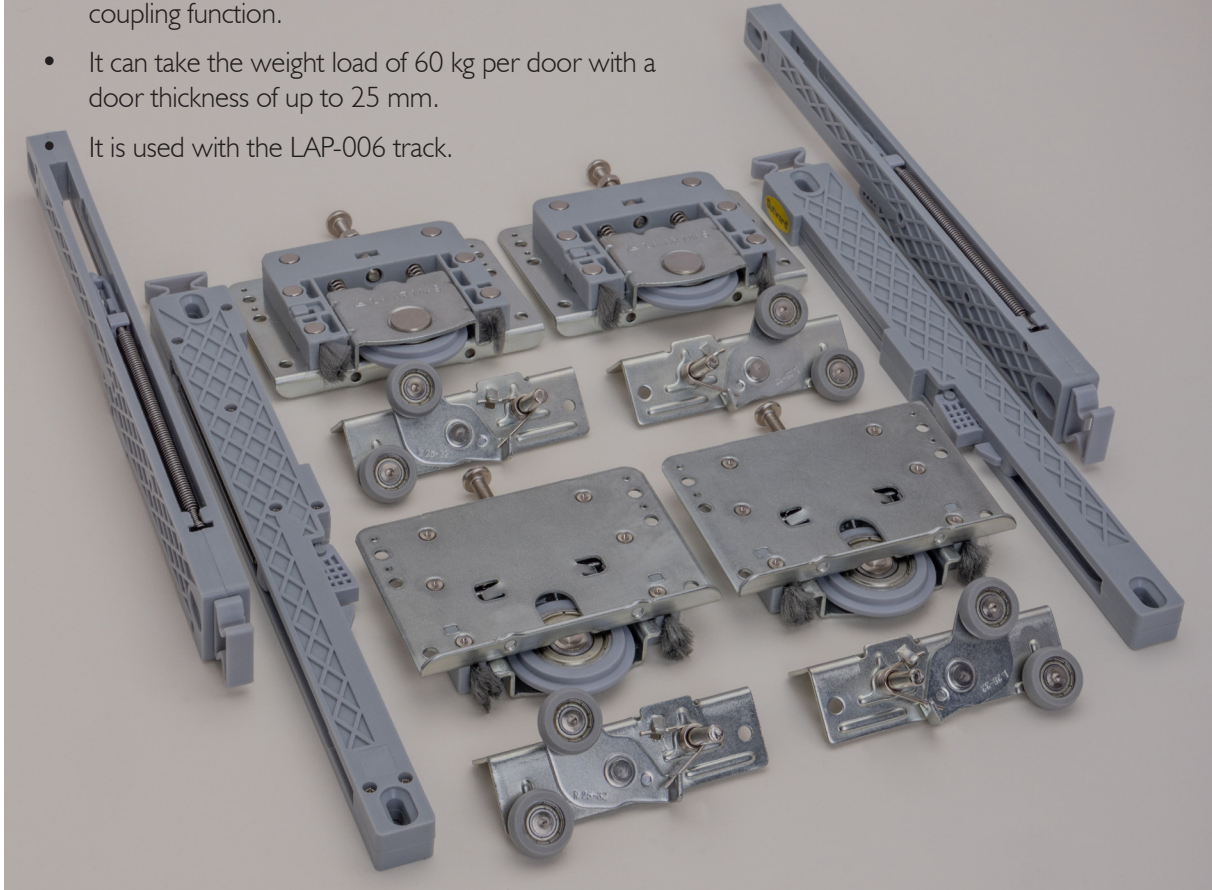
- It can take the weight load of 40 kg per door.
- It is used with the LAP-004 track.
- It comes with a soft opening and closing mechanism.

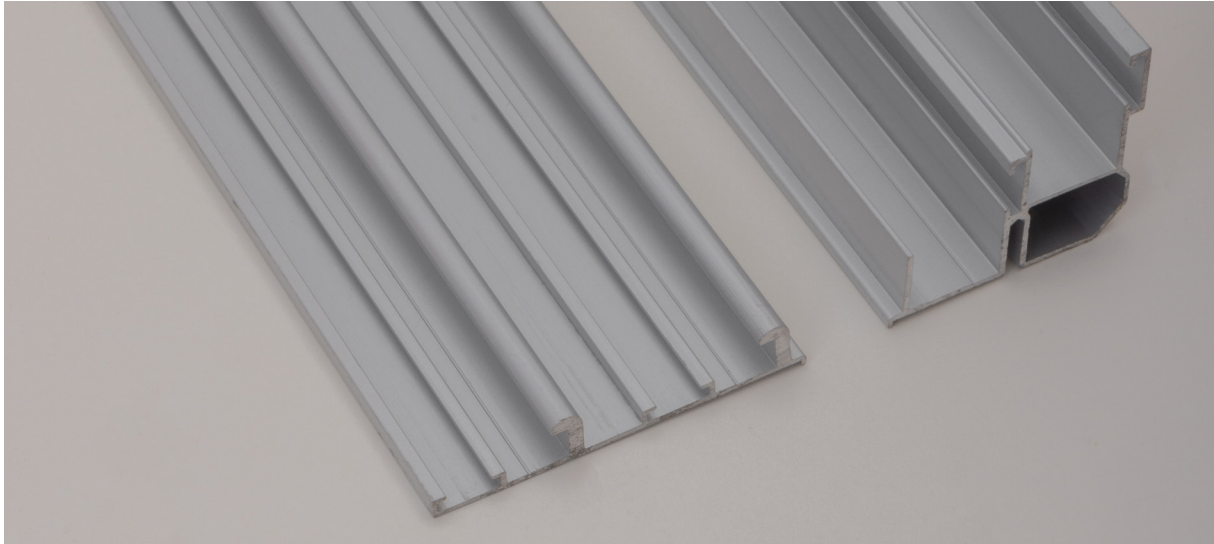


PRODUCT CODE	MATERIAL	SIZE	USED	FINISH
LAP 006	ALUMINIUM SLIDING PROFILE	2.5 MTR & 3.7 MTR	LAWR - 06	ANODISED ALUMINIUM

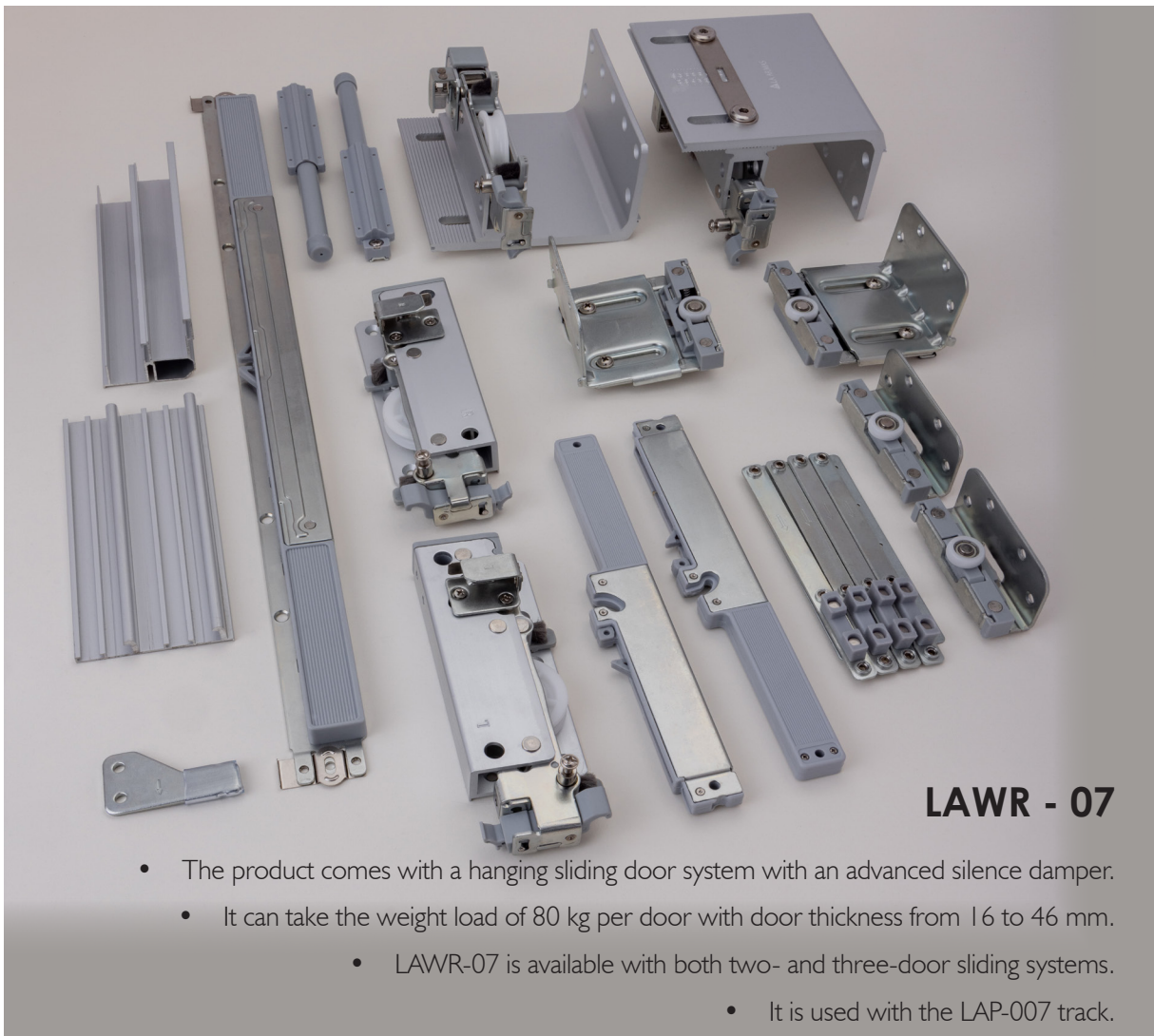
LAWR - 06

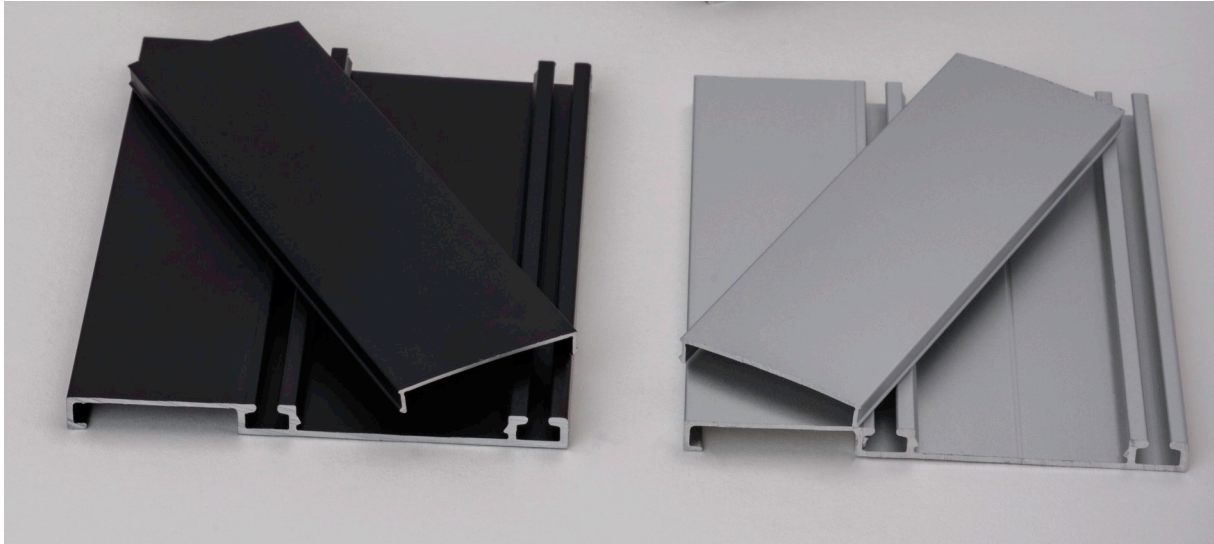
- The product is used with heavy panel wood, solid wood and an aluminium frame.
- The soft close and opening mechanism help in smooth sliding with an anti-jump and automatic coupling function.
- It can take the weight load of 60 kg per door with a door thickness of up to 25 mm.
- It is used with the LAP-006 track.





PRODUCT CODE	MATERIAL	SIZE	USED	FINISH
LAP 007	ALUMINIUM SLIDING PROFILE	3 MTR & 3.7 MTR	LAWR - 07	ANODISED ALUMINIUM



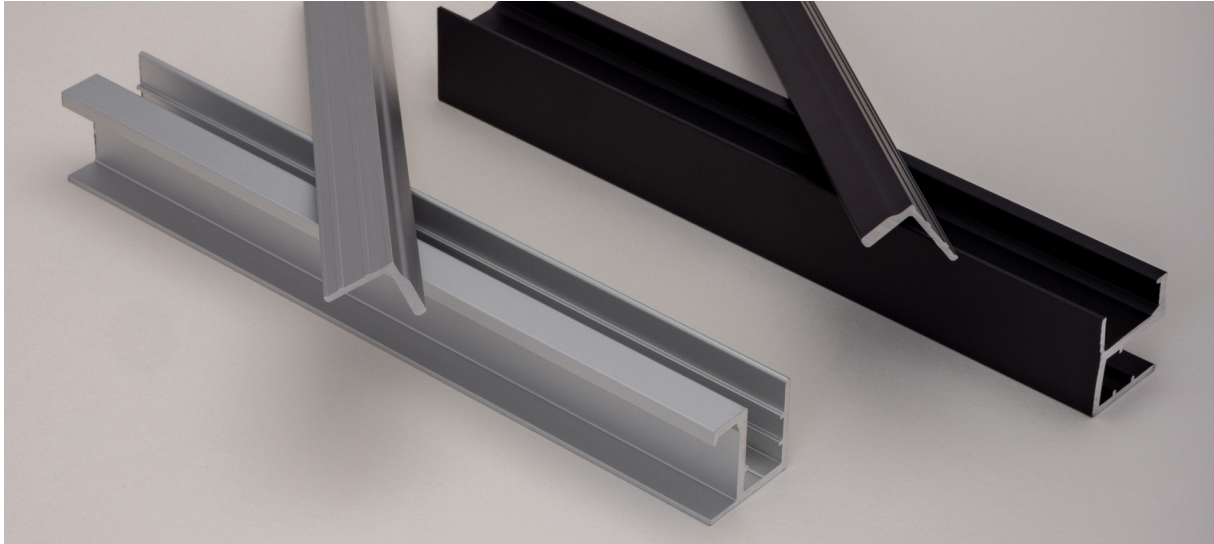


PRODUCT CODE	MATERIAL	SIZE	USED	FINISH
LAP 008	ALUMINIUM SLIDING PROFILE	2.5 MTR & 3.7 MTR	LAWR - 08	ANODISED ALU M. BLACK



LAW R - 08

- The product comes with a soft-close and opening mechanism and a visible roller design.with external fixing.
- The product was applied to the panel wood, solid wood and aluminium frame.
- It can take the weight load of 50 kg per door with door thickness up to 25 mm.
- It is used with the LAP-008 track.



PRODUCT CODE	MATERIAL	SIZE	USED	FINISH
LAP 009	ALUMINIUM SLIDING PROFILE	2.5 MTR	LAWR - 09	ANODISED ALU M. BLACK

LAWR - 09

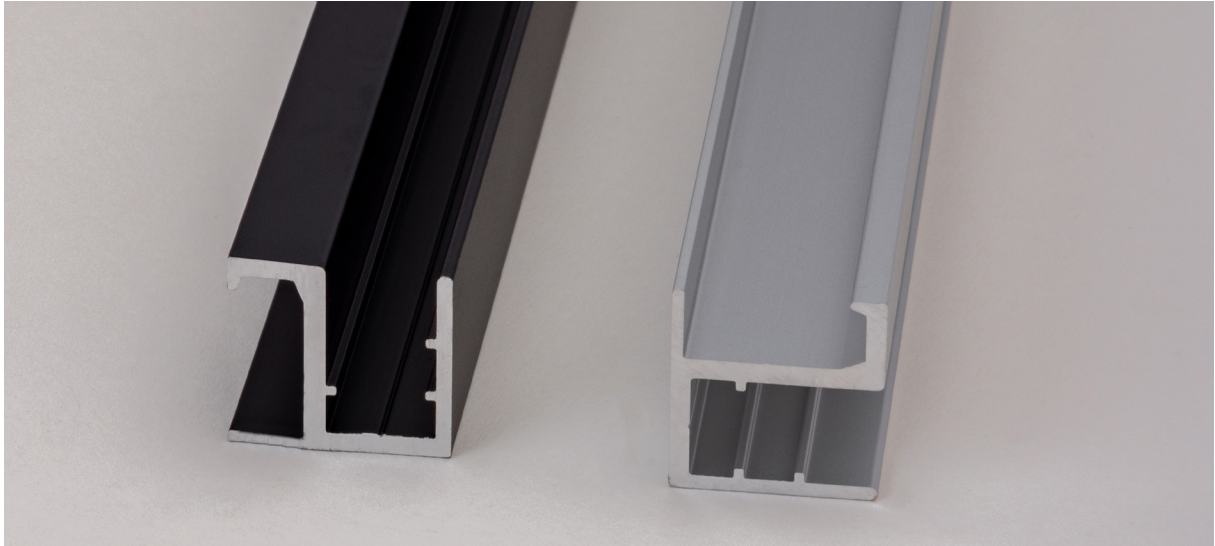


- The product is used with large folding sliding door system.
- It can take the weight load of 30 kg per.

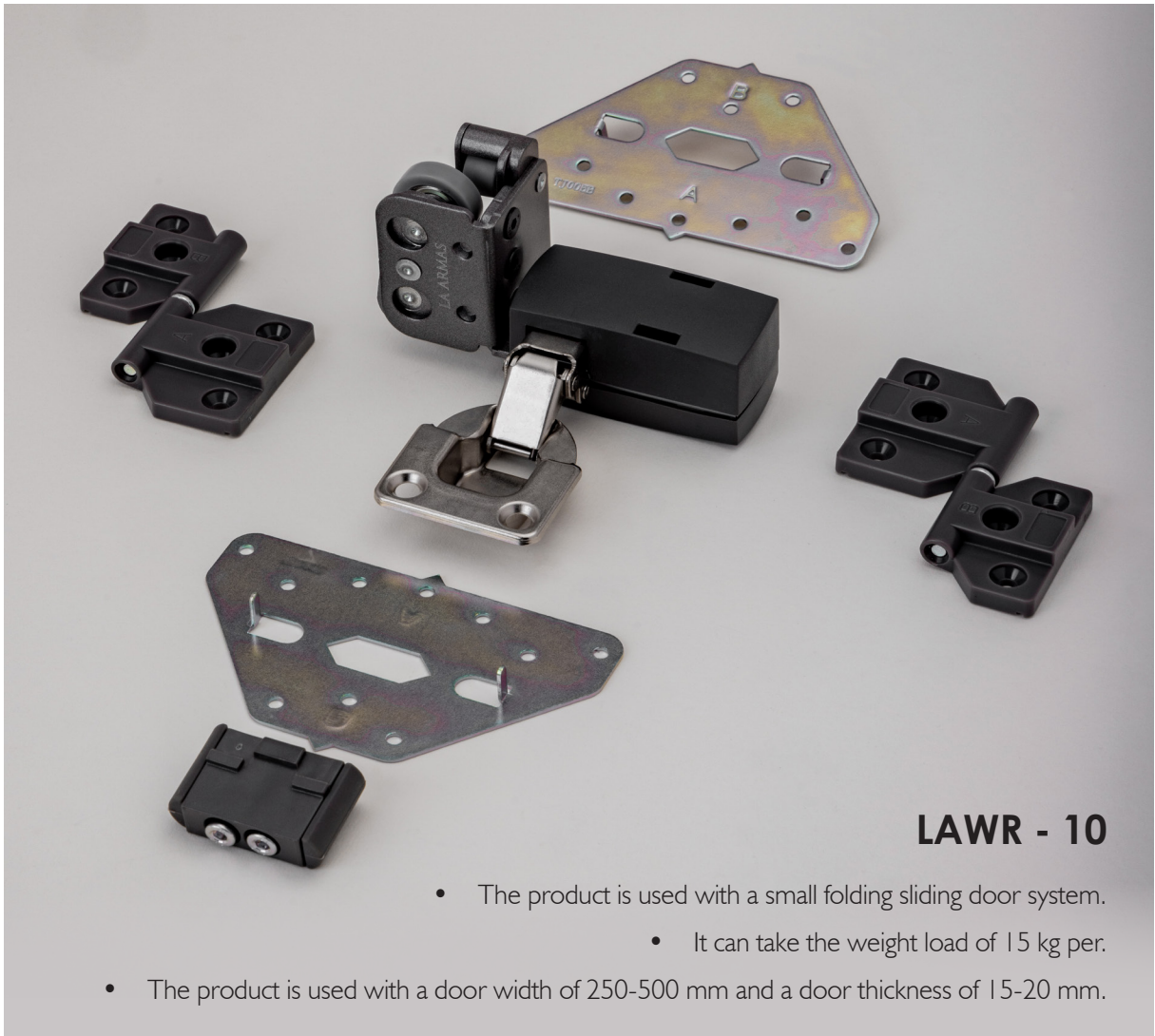
- The product is suitable for wooden and aluminium frame doors.
- The product is used with a door width of 250-600 mm.

SLIDING DOORS MOVES EASILY AND QUIETLY AND ALSO CLOSSES GENTLY WITH SILENT SYSTEM





PRODUCT CODE	MATERIAL	SIZE	USED	FINISH
LAP 010	ALUMINIUM SLIDING PROFILE	2.5 MTR	LAWR - 10	ANODISED ALU M. BLACK



LAWR - 10

- The product is used with a small folding sliding door system.
 - It can take the weight load of 15 kg per.
- The product is used with a door width of 250-500 mm and a door thickness of 15-20 mm.



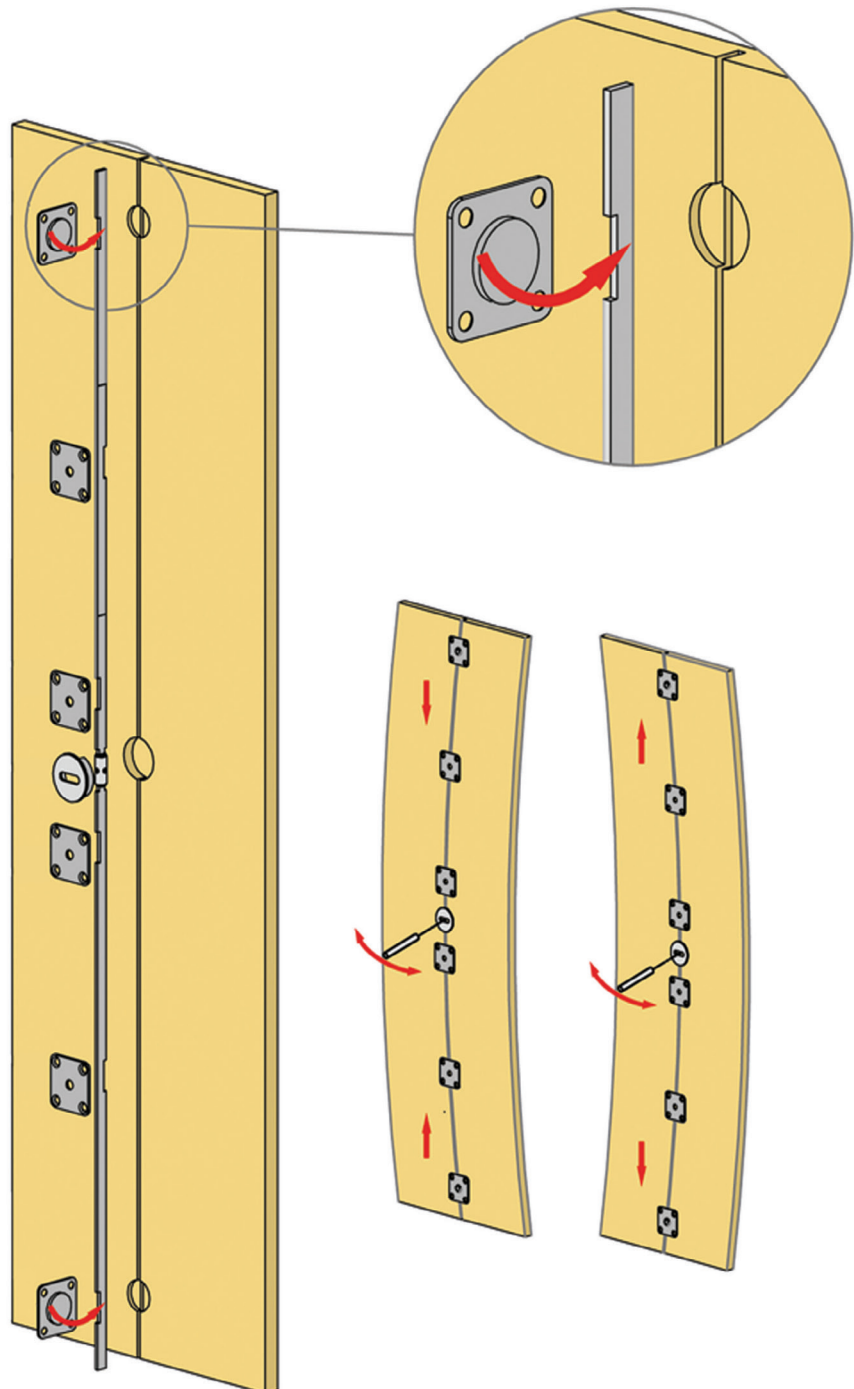
DOOR ALIGNMENT

Door's spine

Bending of wardrobe doors under unsuitable weather conditions is a common problem. To avoid this issue, Laarmas brings the product door alignment. It is fairly easy to adjust if you understand how it works. The screw is turned to align the door as shown in the image. They slot together and are held in place with a locking screw which tightens up to hold the door straight. Finally, there is an adjusting bolt which is used to move the door left and right or change the angle.

LADA - 01

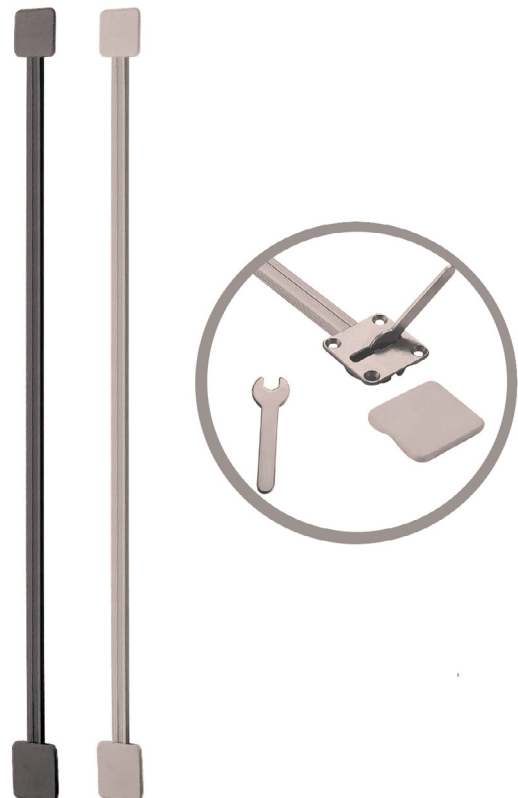
- The product is used for door alignment.
- The screw is turned to align the door





LADA - 02

- The product is used for door alignment of large doors.
- The screw is turned to align the door.
- The product comes with a length of 2.3 m.
- It comes in two finishes: black and light grey.



PUSH-PULL CATCHER

MECHANICAL PUSH TO OPEN & CLOSE

Laarmas brings you the modern kitchen designing – roller shutters. These shutters are an easy and convenient solution to store your appliances. These shutters are aesthetically more appealing because the gap between the slats becomes smaller in the closed state, which gives an attractive look to your kitchen. Roller shutters provide optimum functionality with a high-quality mechanism that ensures a smooth motion. This stylish system requires a flat bottom profile to be fitted in and is ready to be installed in a finished furniture cabinet.



PUSH CATCHER - 01

- Opening system for handleless furniture fronts.
- Can be used with Intermat and perfect concealed hinges.
- For door widths of 300 - 600 mm and door heights of 300 - 2400 mm.
- Material: ABS
- Colour: silver grey



PUSH CATCHER - 02

- Opening system for wardrobe rows used with heavy doors
- Can be used with intermat and perfect concealed hinges.
- For door widths of 300 - 600 mm and door heights of 300 - 2400 mm.
- Material: ABS
- Colour: dark grey







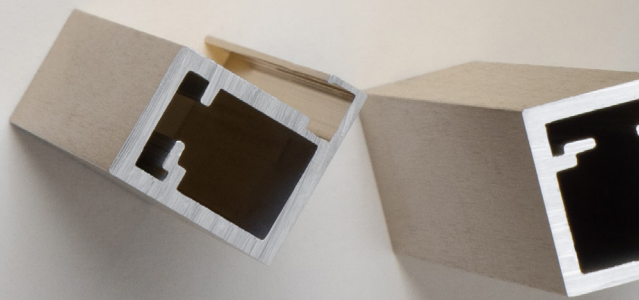
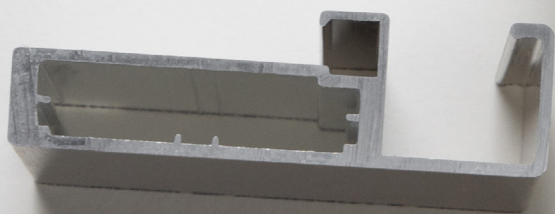
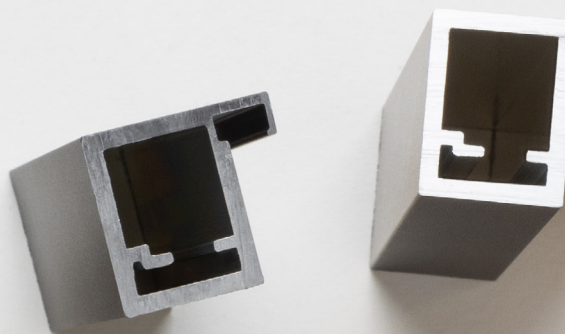
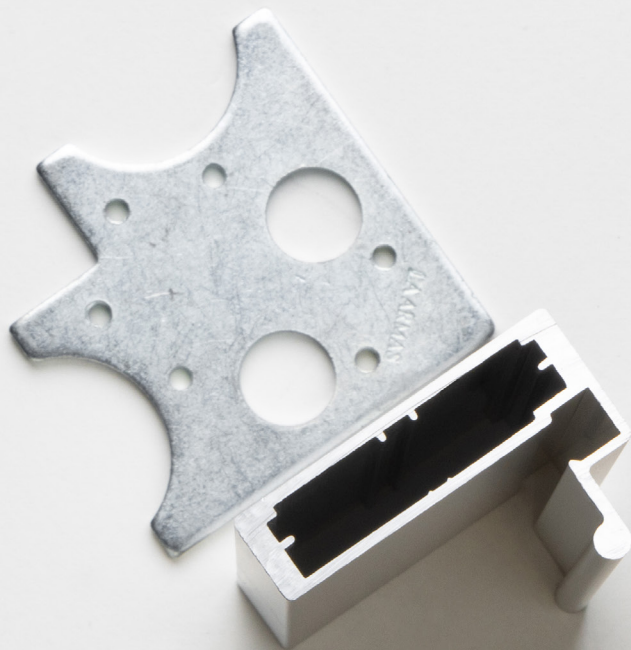


ALUMINIUM PROFILES

Enhance your kitchen's aesthetics

Aluminium profiles are a contemporary addition to the kitchen and wardrobe furnishing. Keeping in mind the various requirements of our customers, Laarmas is involved in offering the best quality of aluminium profiles. The offered aluminium profiles are extensively used as components in building, enhancing the appearance of your kitchen cabinet doors and office interiors. Aluminium profile is a relatively soft, durable, lightweight, ductile, and malleable metal. The designs are attractive and easily blend with the interior. These profiles enhance the look of the kitchen and are easy to clean and install. Also, profile connectors are used to connect these profiles, which ensures sturdy joint connections. They are ideal for long-term use, as aluminium profiles come in the length of 3 metres, which can be cut to size as per requirement.

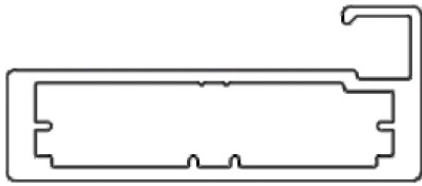




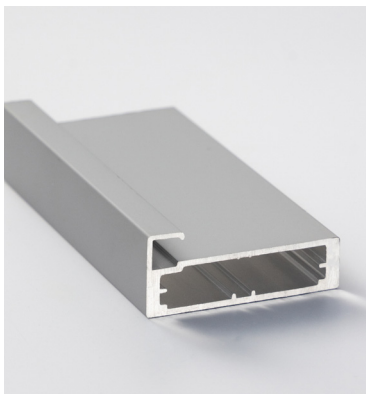
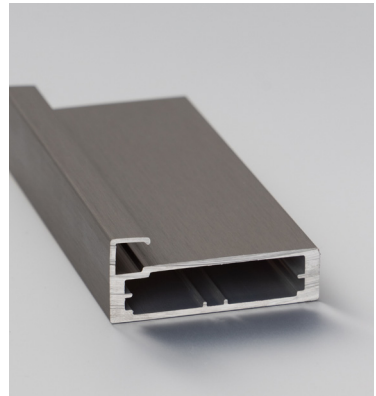
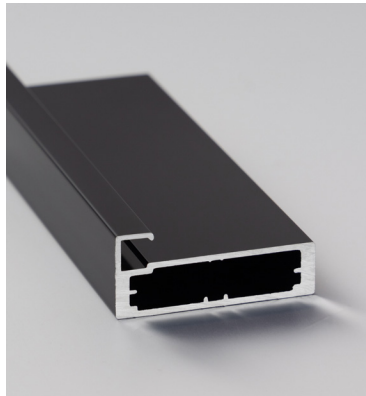
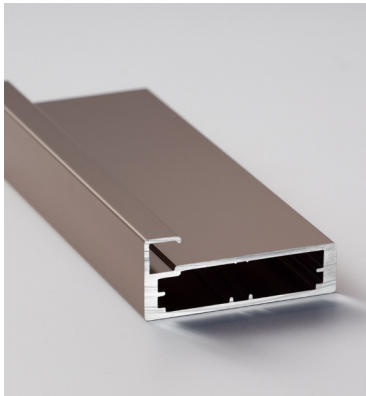
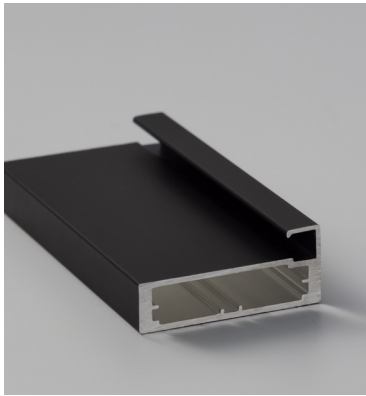
SHUTTER PROFILES

50 mm



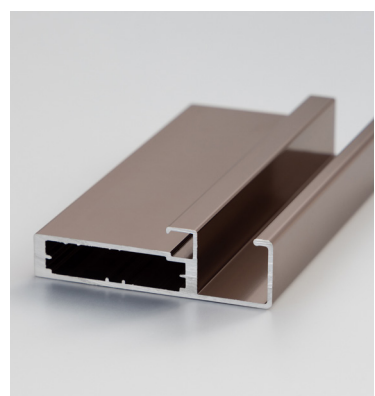
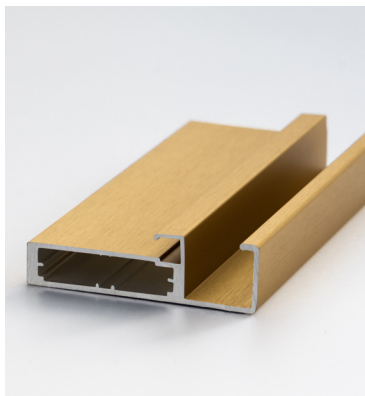


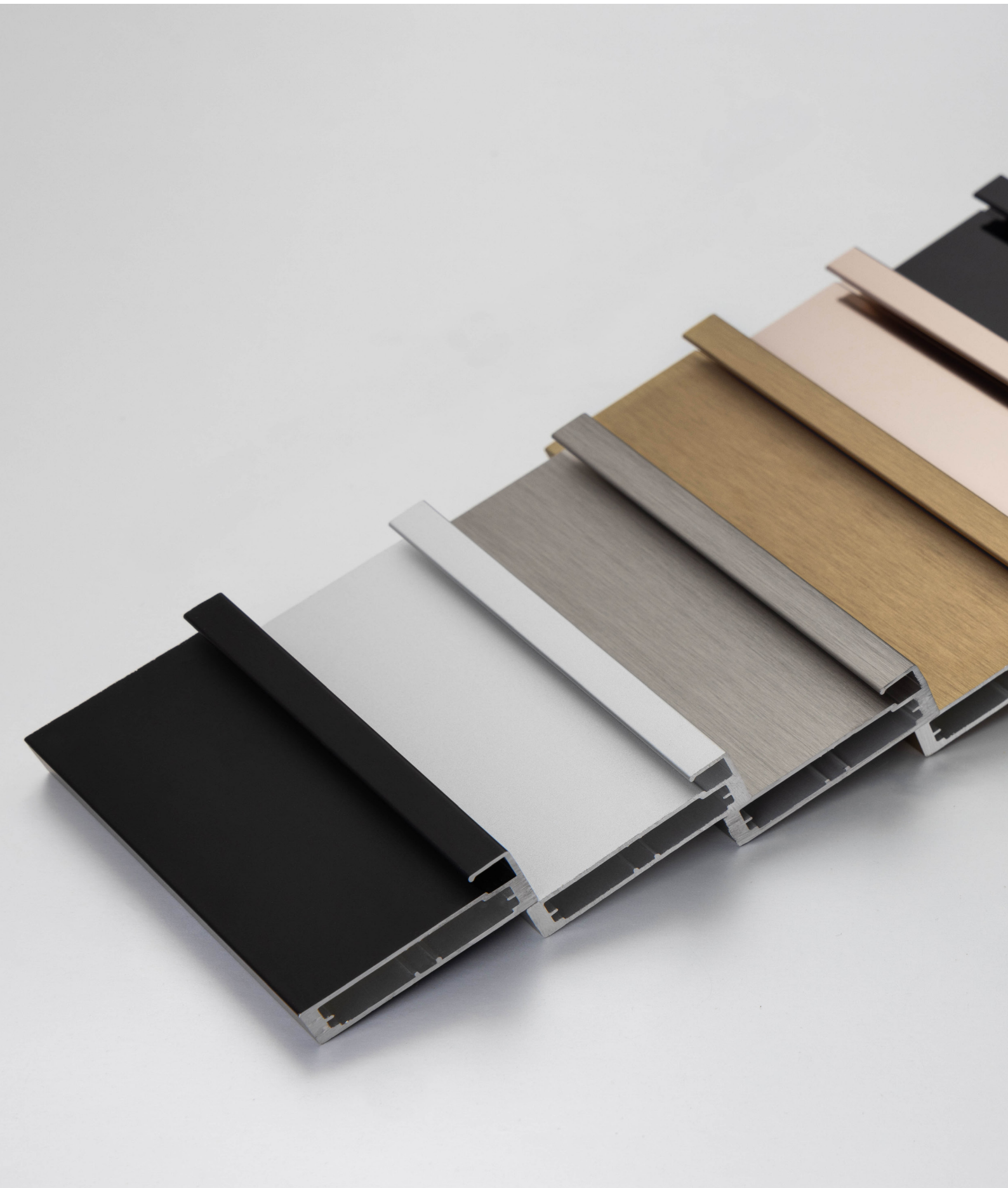
PRODUCT CODE	LAP 016					
MATERIAL	ALUMINIUM SHUTTER PROFILE (3MTR) (50MM)					
FINISH	ANOD	M.BLACK	SS	B.GOLD	P.ROSE	P.BLACK

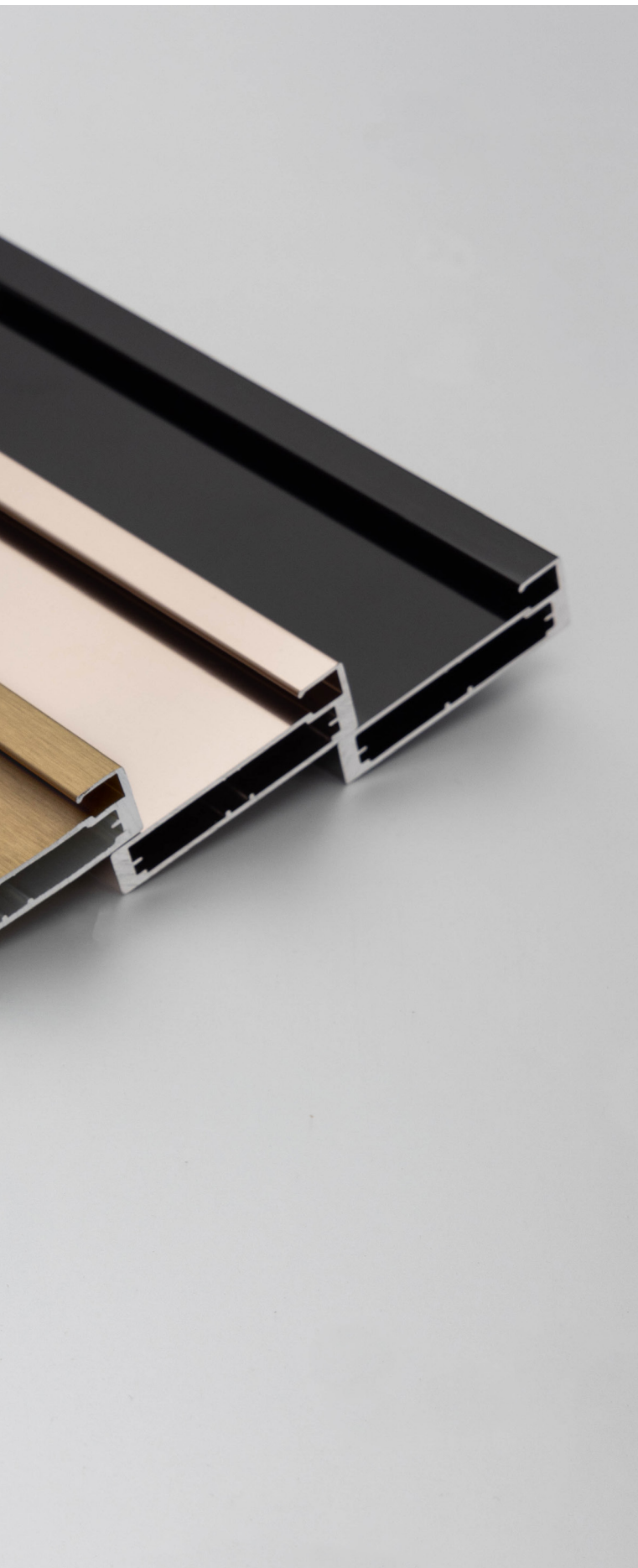




PRODUCT CODE	LAP 017					
MATERIAL	ALUMINIUM SHUTTER HANDLE PROFILE (3MTR) (50MM)					
FINISH	ANOD	M.BLACK	SS	B.GOLD	P.ROSE	P.BLACK



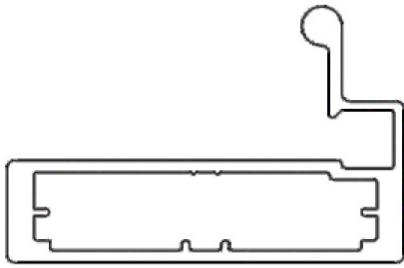




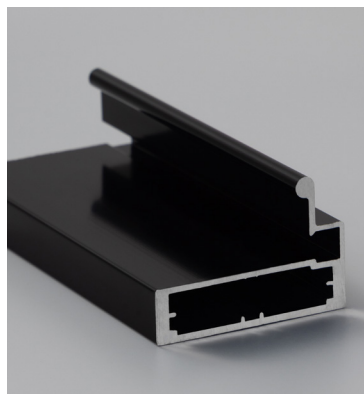
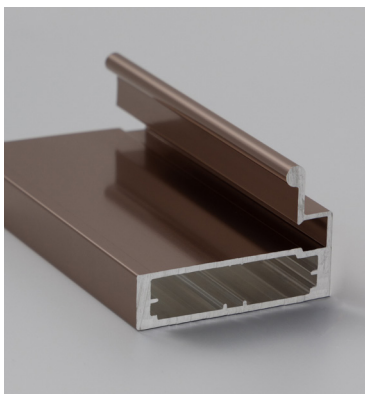
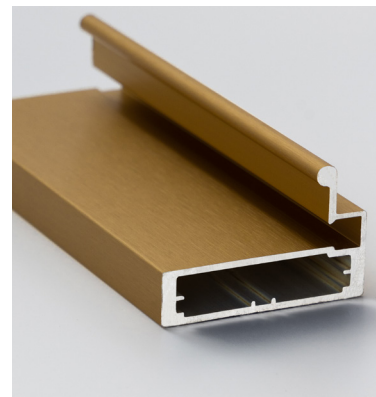
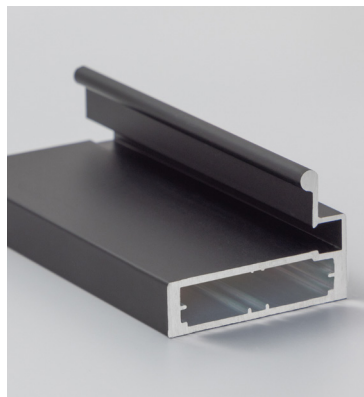
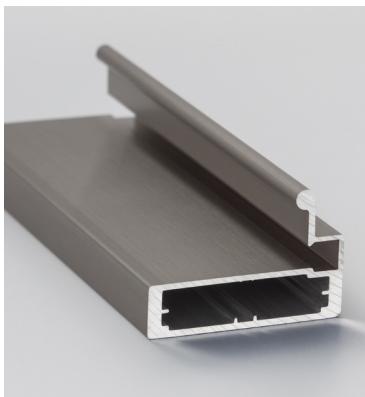
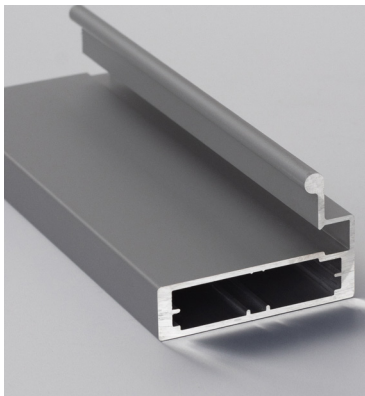
LAPC-002

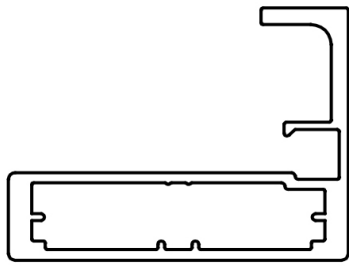


- Profile connectors provide rigidity and strength to the profiles.
- It comes with a stainless steel screw.
- It can be used with LAP-016, 017, 031 and 037.



PRODUCT CODE	LAP 03 I					
MATERIAL	ALUMINIUM SHUTTER HANDLE PROFILE (3MTR) (50MM)					
FINISH	ANOD	SS	M.BLACK	B.GOLD	P.ROSE	P.BLACK





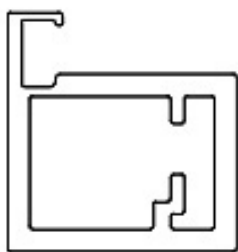
PRODUCT CODE	LAP 037		
MATERIAL	ALUMINIUM SHUTTER HANDLE PROFILE (3MTR) (50MM)		
FINISH	M.BLACK	B.GOLD	P.BLACK



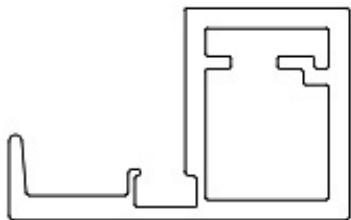
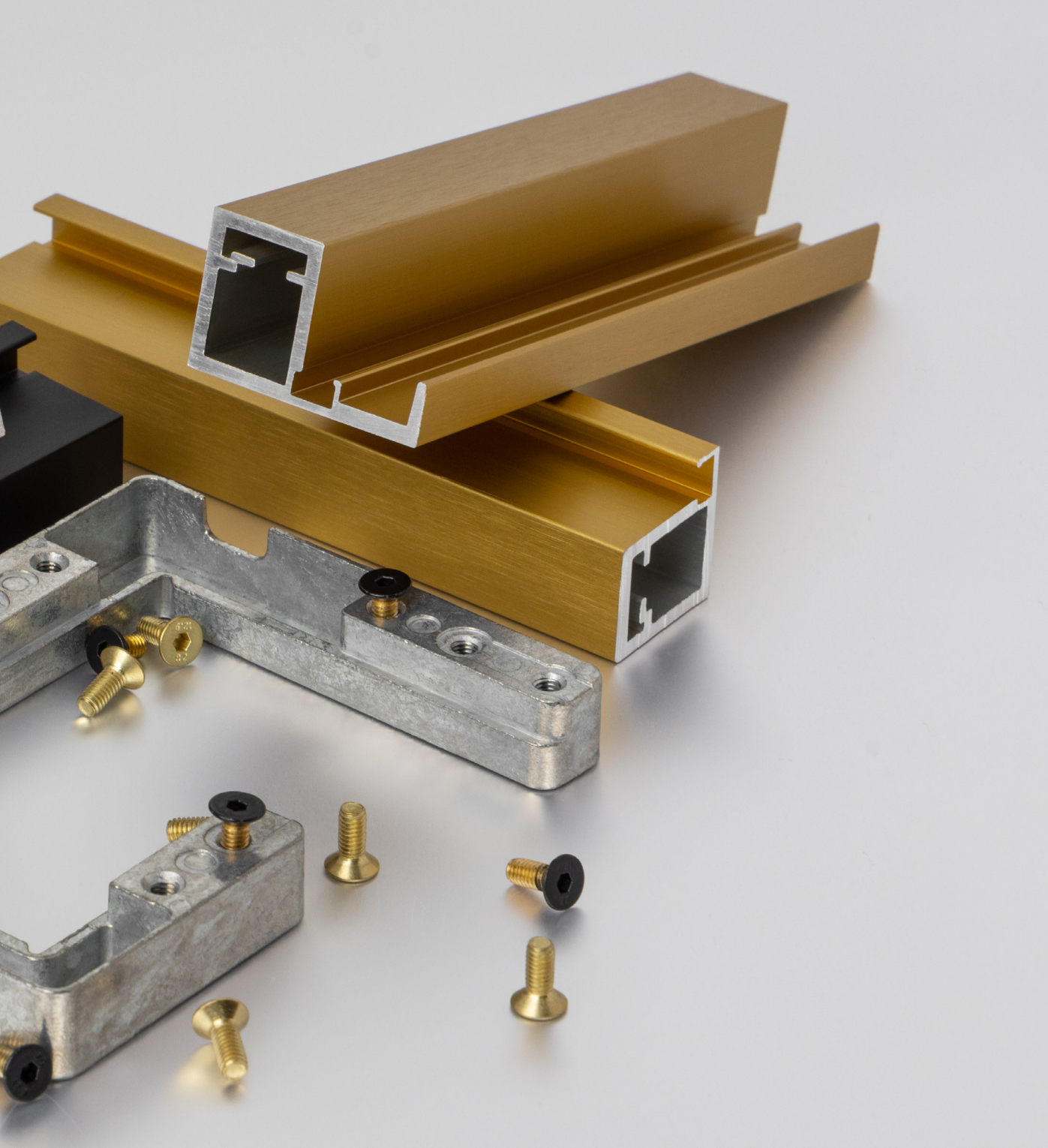


SHUTTER PROFILES

25 mm

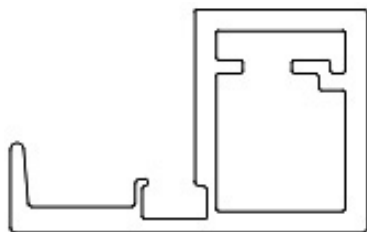


PRODUCT CODE	LAP 034	
MATERIAL	ALUMINIUM SHUTTER PROFILE (3MTR) (25MM)	
FINISH	M.BLACK	B.GOLD

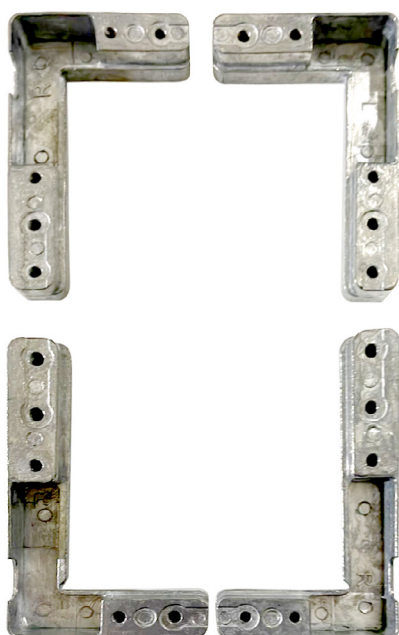


PRODUCT CODE	LAP 035	
MATERIAL	ALUMINIUM SHUTTER HANDLE PROFILE (3MTR) (25MM)	
FINISH	M.BLACK	B.GOLD

ALL PICTURES SHOWN ARE FOR ILLUSTRATION PURPOSE ONLY

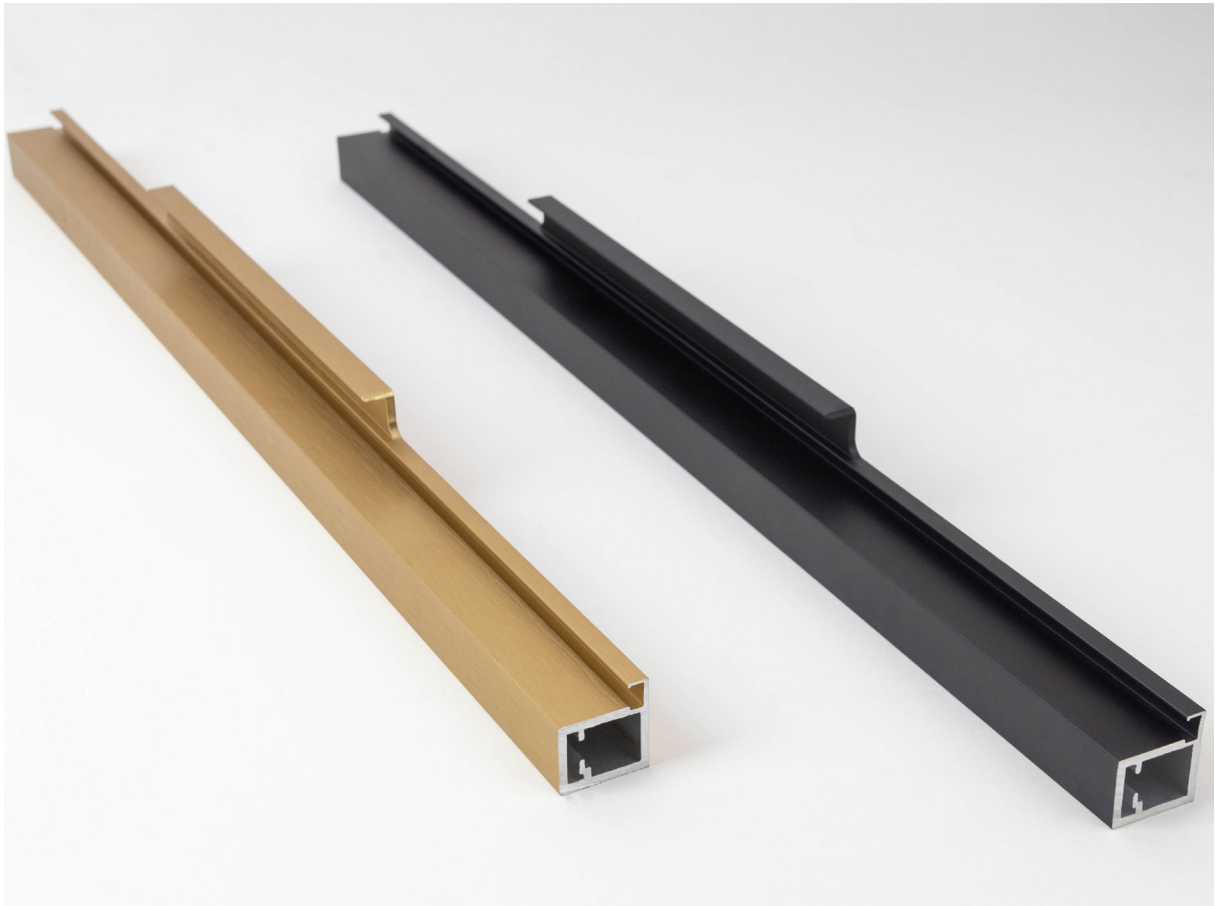
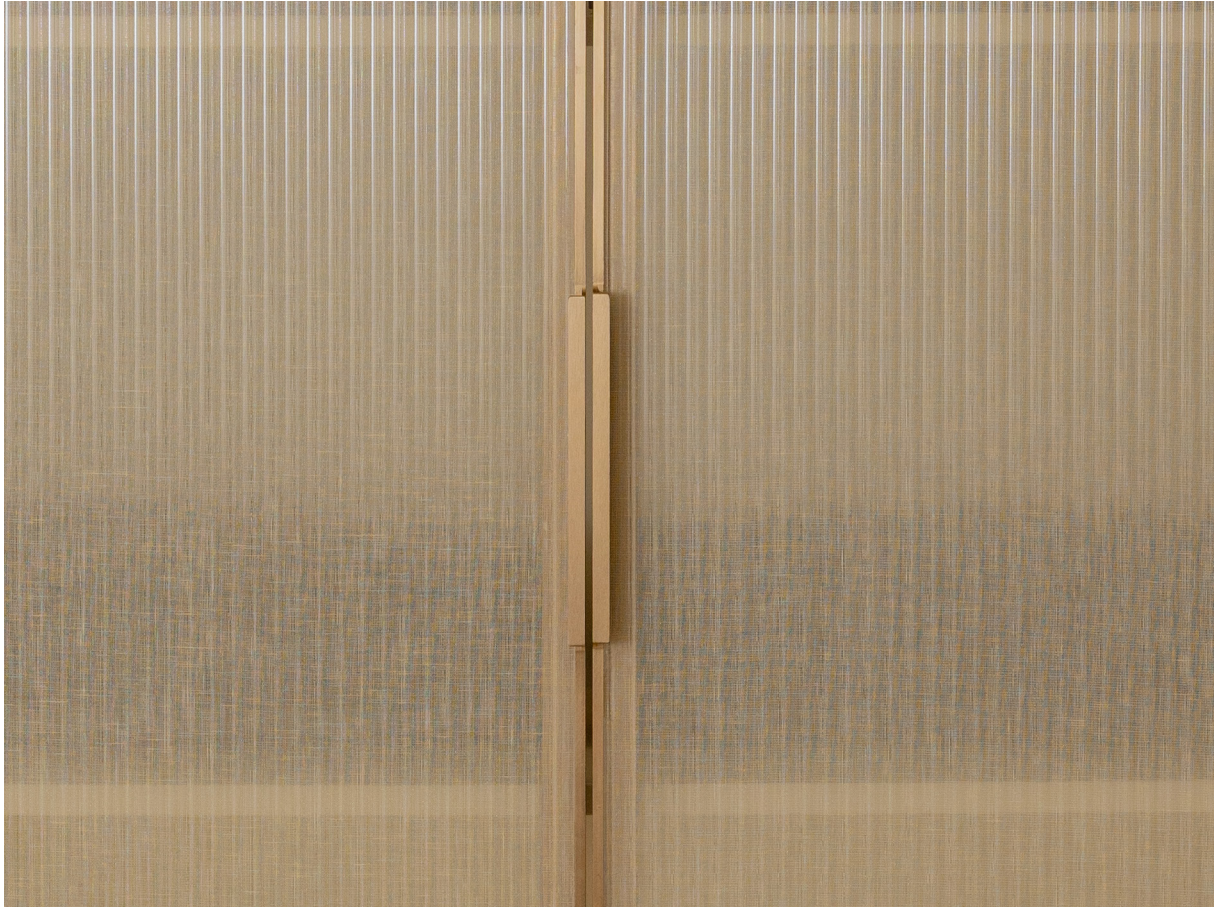


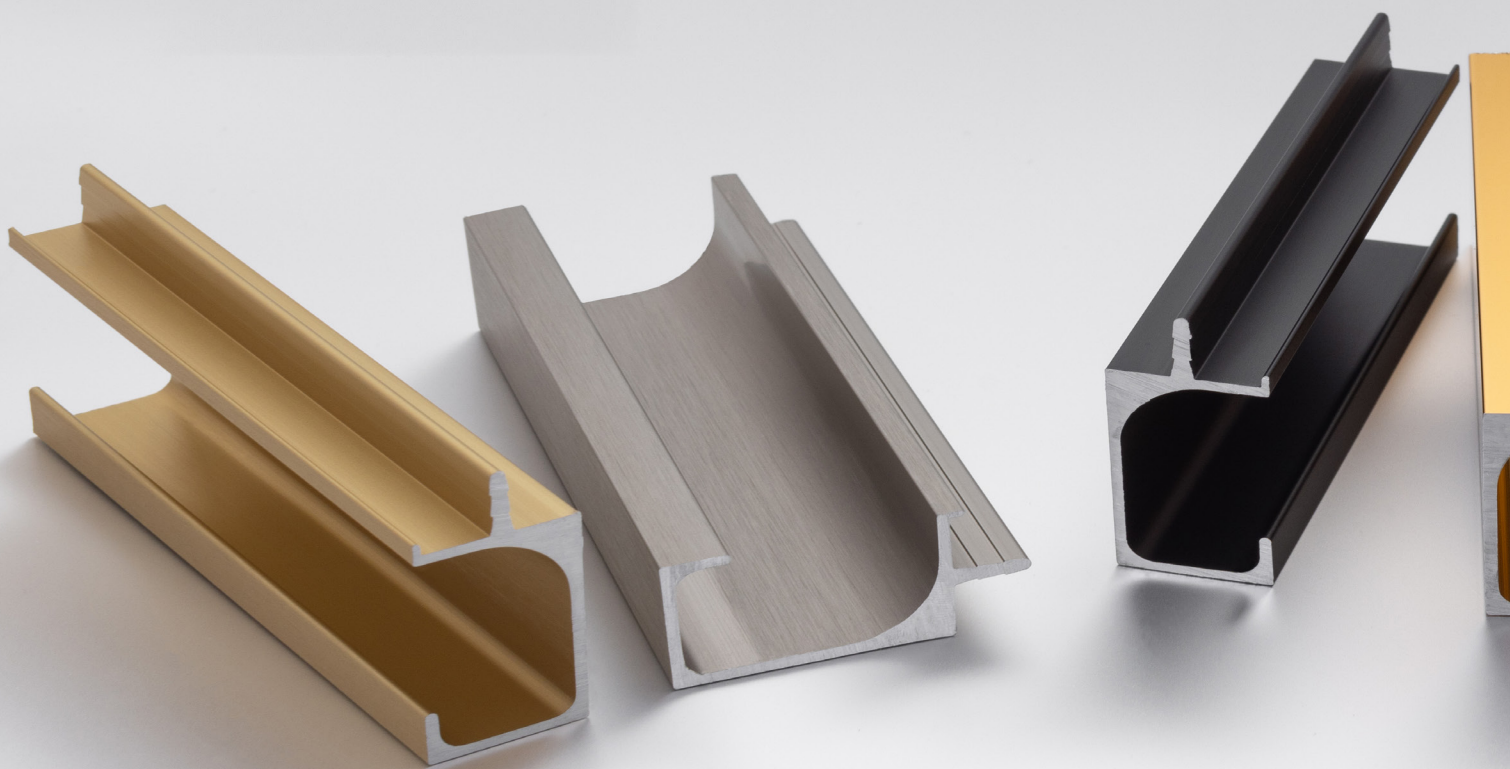
PRODUCT CODE	LAP 036	
MATERIAL	ALUMINIUM SHUTTER HANDLE PROFILE (3MTR) (25MM) 200MM CNC HANDLE	
FINISH	M.BLACK	B.GOLD



LAPC-004

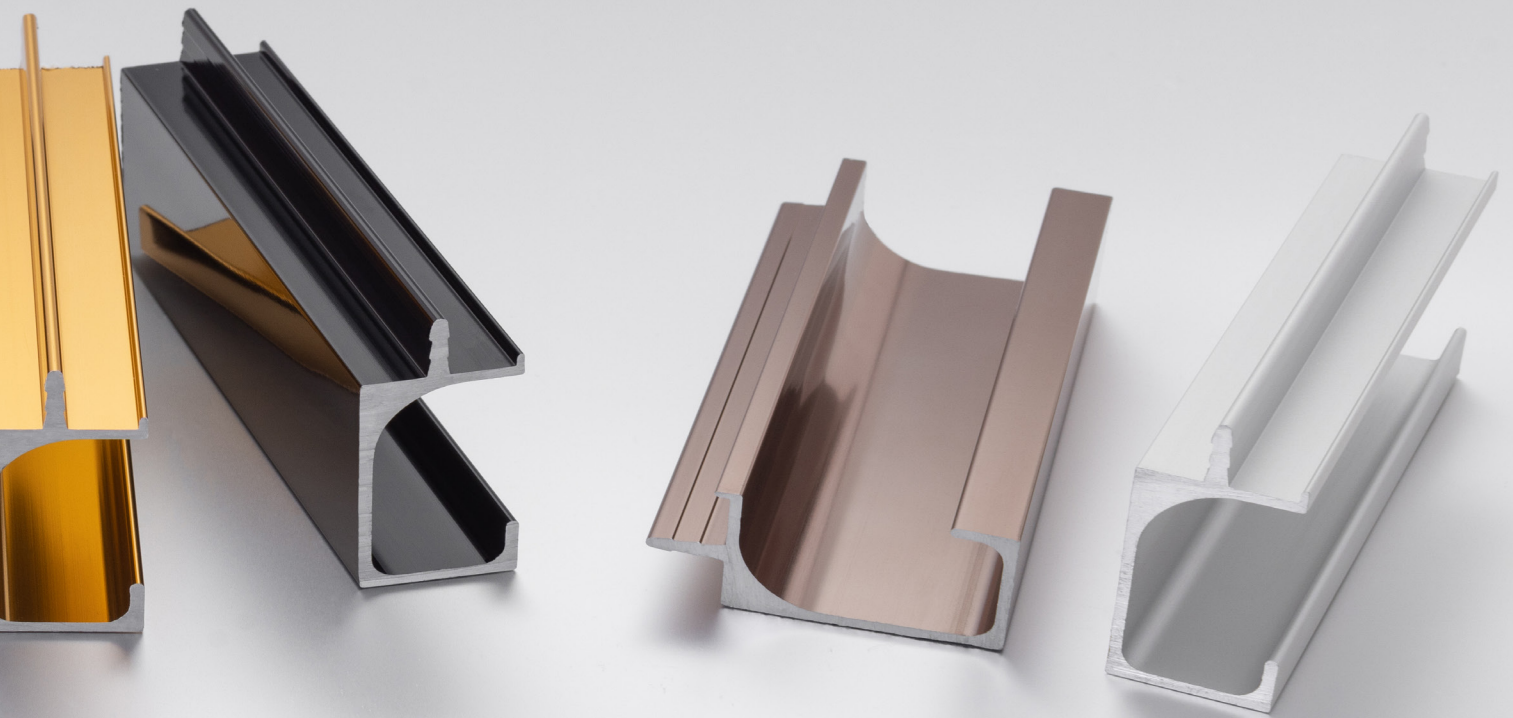
- Profile connectors provide rigidity and strength to the profiles.
- They are made up of virgin metal.
- It comes with a coloured screw.
- It can be used with LAP-034, 35 & 36.

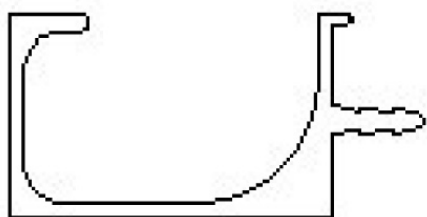




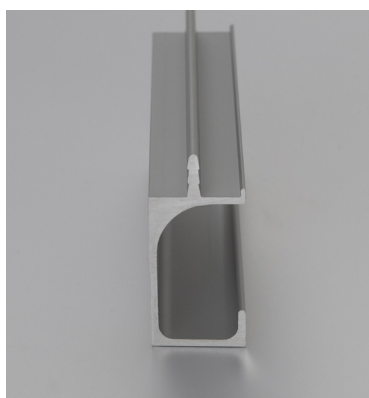
HANDLE PROFILES

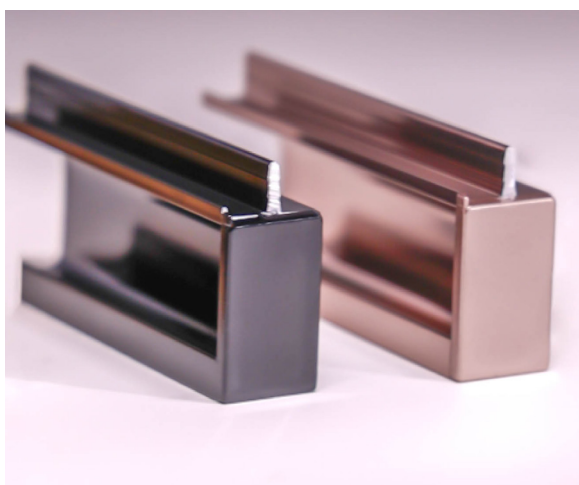
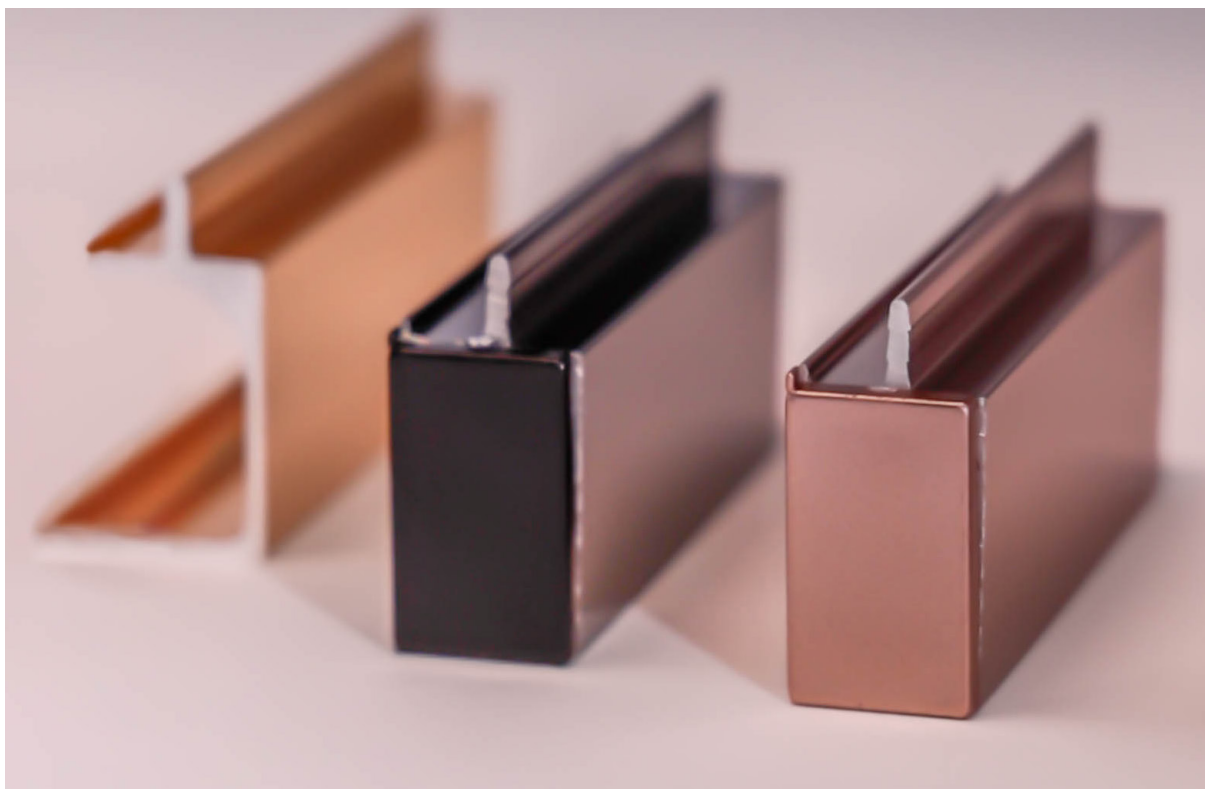
ALUMINIUM PROFILES
EASILY BLENDS
& ENHANCES THE
KITCHEN INTERIOR



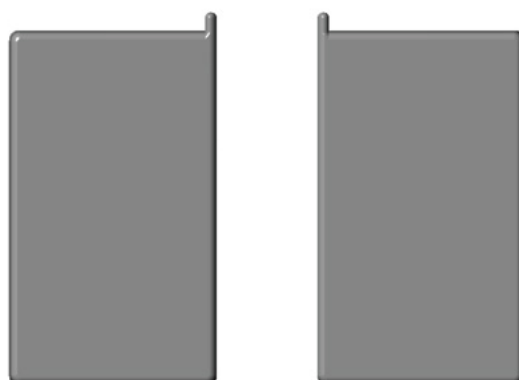


PRODUCT CODE	LAP 018							
MATERIAL	ALUMINIUM G-HANDLE PROFILE (3MTR) (35MM)							
FINISH	ANOD	CP	SS	M.BLACK	B.GOLD	P.ROSE	P.GOLD	P.BLACK

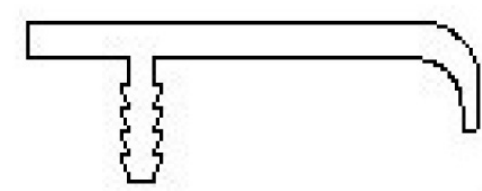




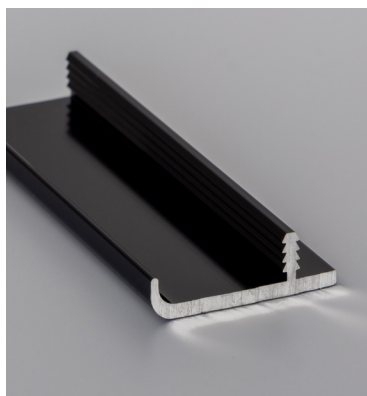
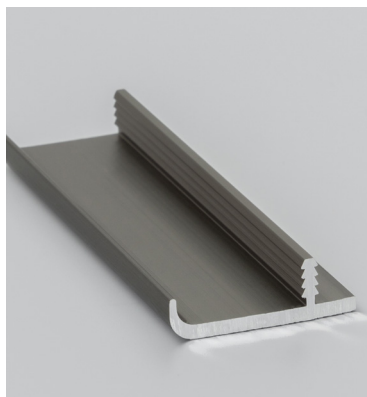
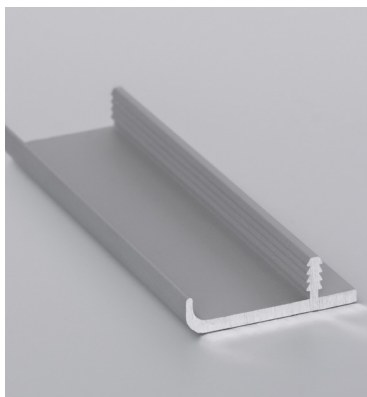
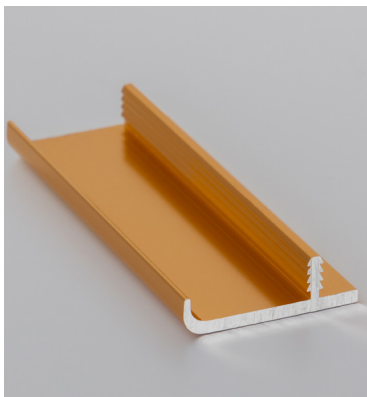
LAEC-001



- End caps come in pairs, right and left.
- They are made up of ABS plastic material.
- It can be used with LAP-018.
- Available in all aluminium profile colours.

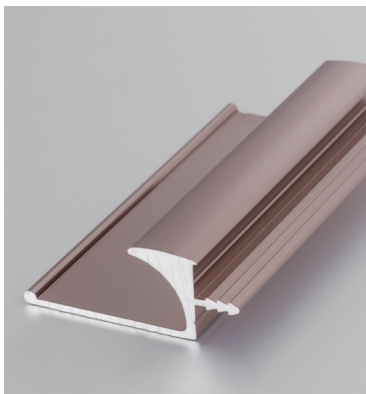
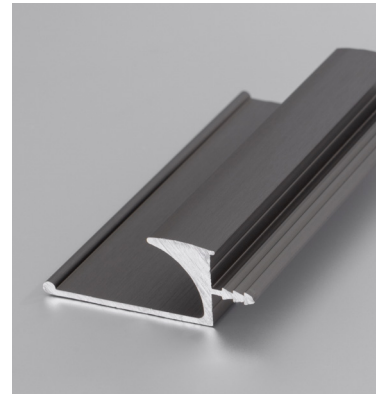
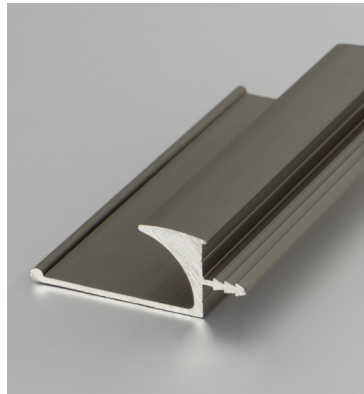
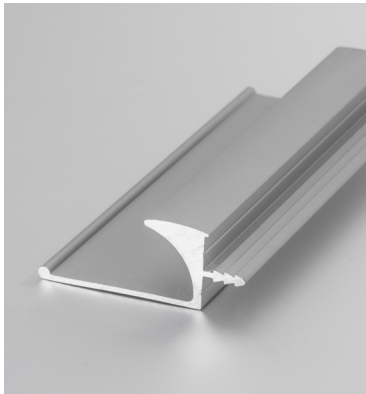


PRODUCT CODE	LAP 019						
MATERIAL	ALUMINIUM EDGE HANDLE PROFILE (3MTR) (40MM)						
FINISH	P.GOLD	ANOD	SS	M.BLACK	CP	P.ROSE	P.BLACK

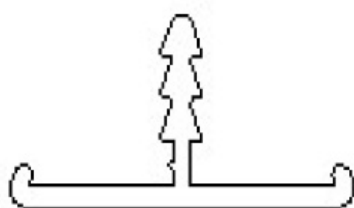
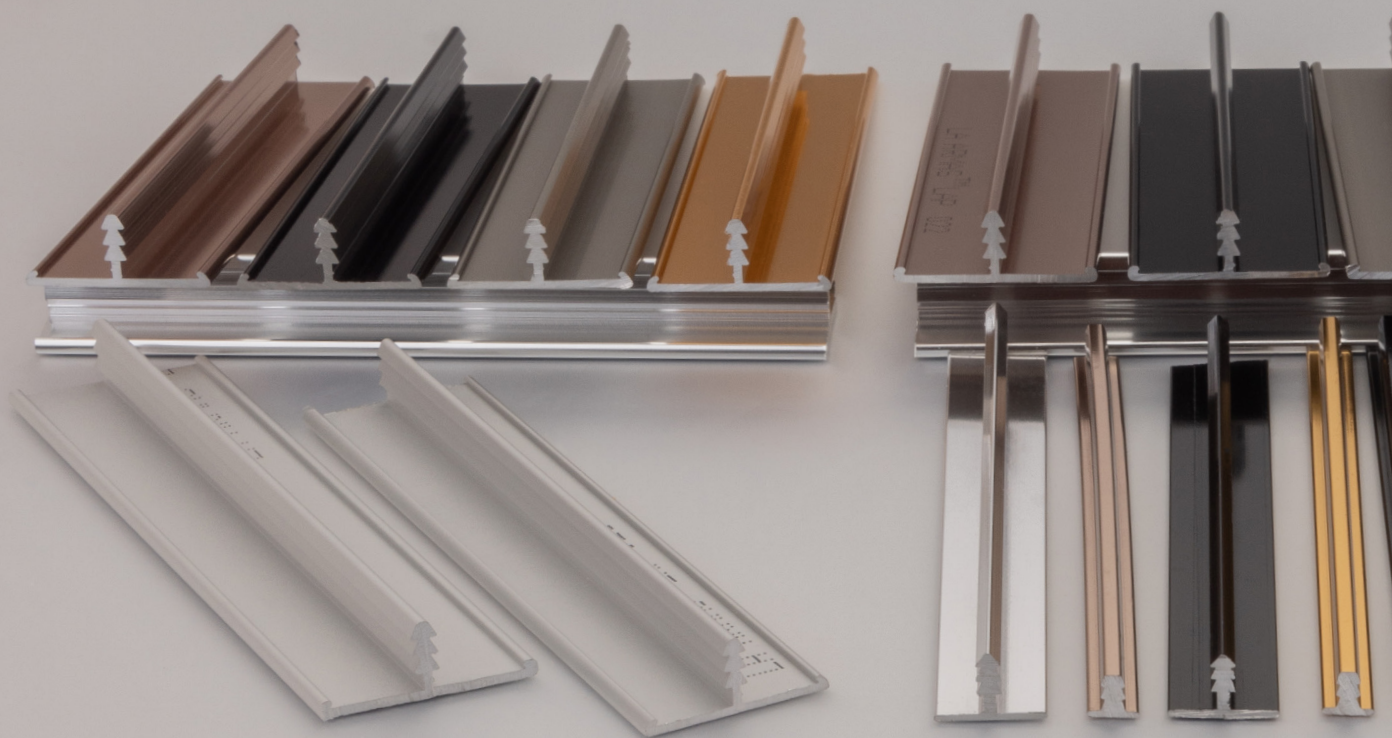




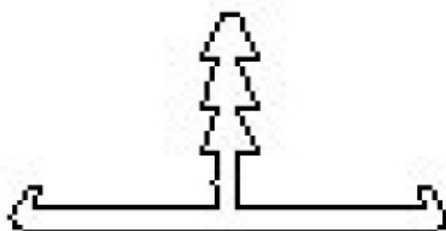
PRODUCT CODE	LAP 020			
MATERIAL	ALUMINIUM HANDLE PROFILE (3MTR) (50MM)			
FINISH	ANOD	CP	SS	P.ROSE



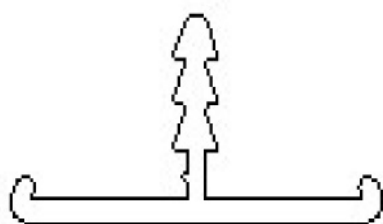
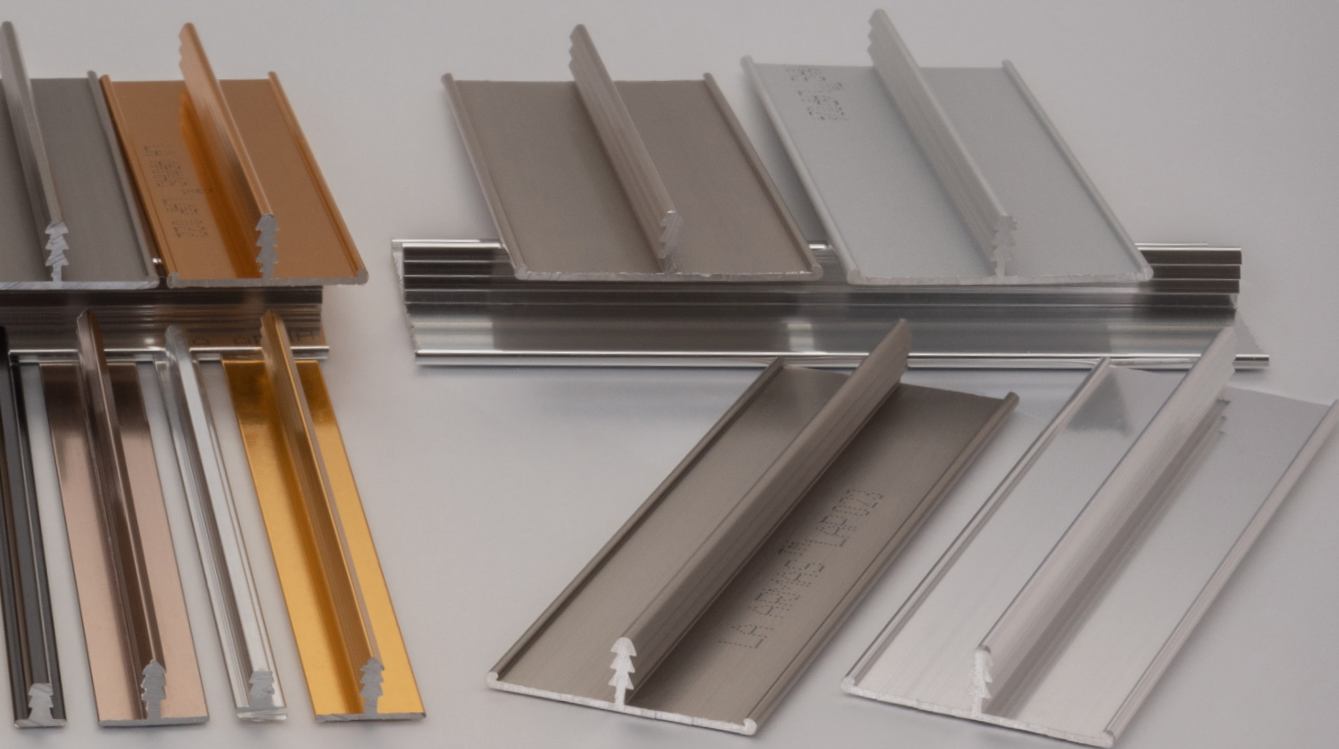
EDGE PROFILES



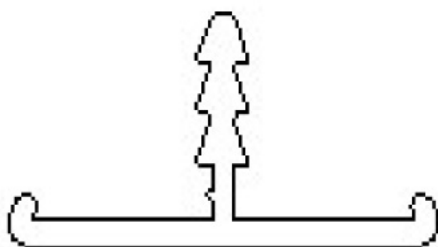
PRODUCT CODE	LAP 021					
MATERIAL	ALUMINIUM EDGE PROFILE-T (3MTR) (22MM)					
FINISH	ANOD	SS	CP	P:ROSE	P:GOLD	P:BLACK



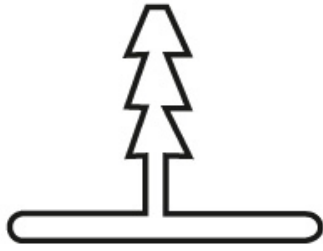
PRODUCT CODE	LAP 022					
MATERIAL	ALUMINIUM EDGE PROFILE-T (3MTR) (25MM)					
FINISH	ANOD	SS	CP	P:ROSE	P:GOLD	P:BLACK



PRODUCT CODE	LAP 023	
MATERIAL	ALUMINIUM EDGE PROFILE-T (3MTR) (32MM)	
FINISH	SS	CP

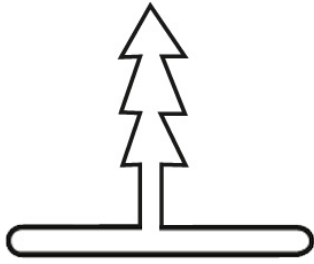


PRODUCT CODE	LAP 024		
MATERIAL	ALUMINIUM EDGE PROFILE-T (3MTR) (38MM)		
FINISH	ANOD	SS	CP

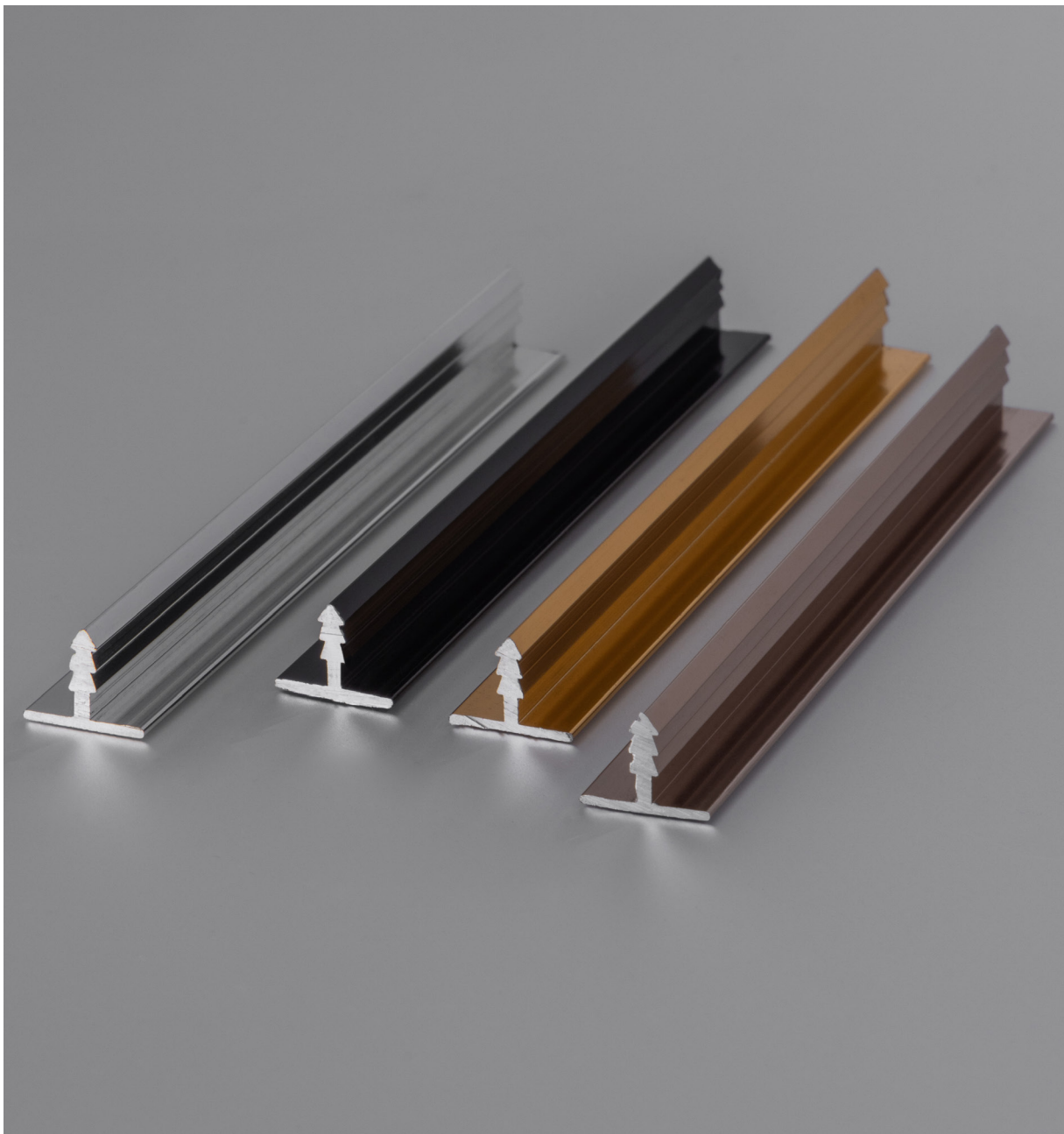


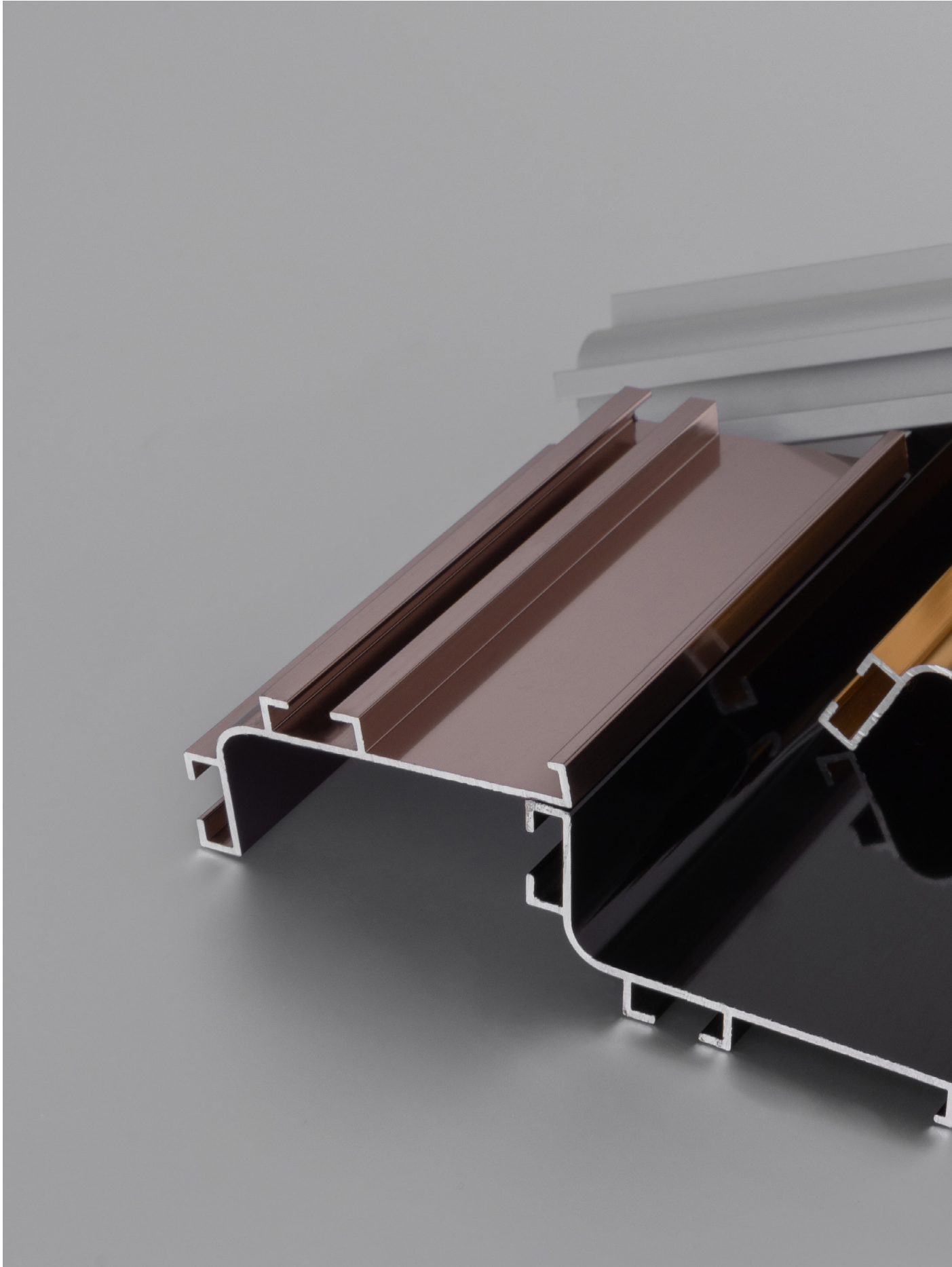
PRODUCT CODE	LAP 025			
MATERIAL	ALUMINIUM EDGE PROFILE-T(3MTR) (12MM)			
FINISH	CP	PROSE	P.GOLD	P.BLACK



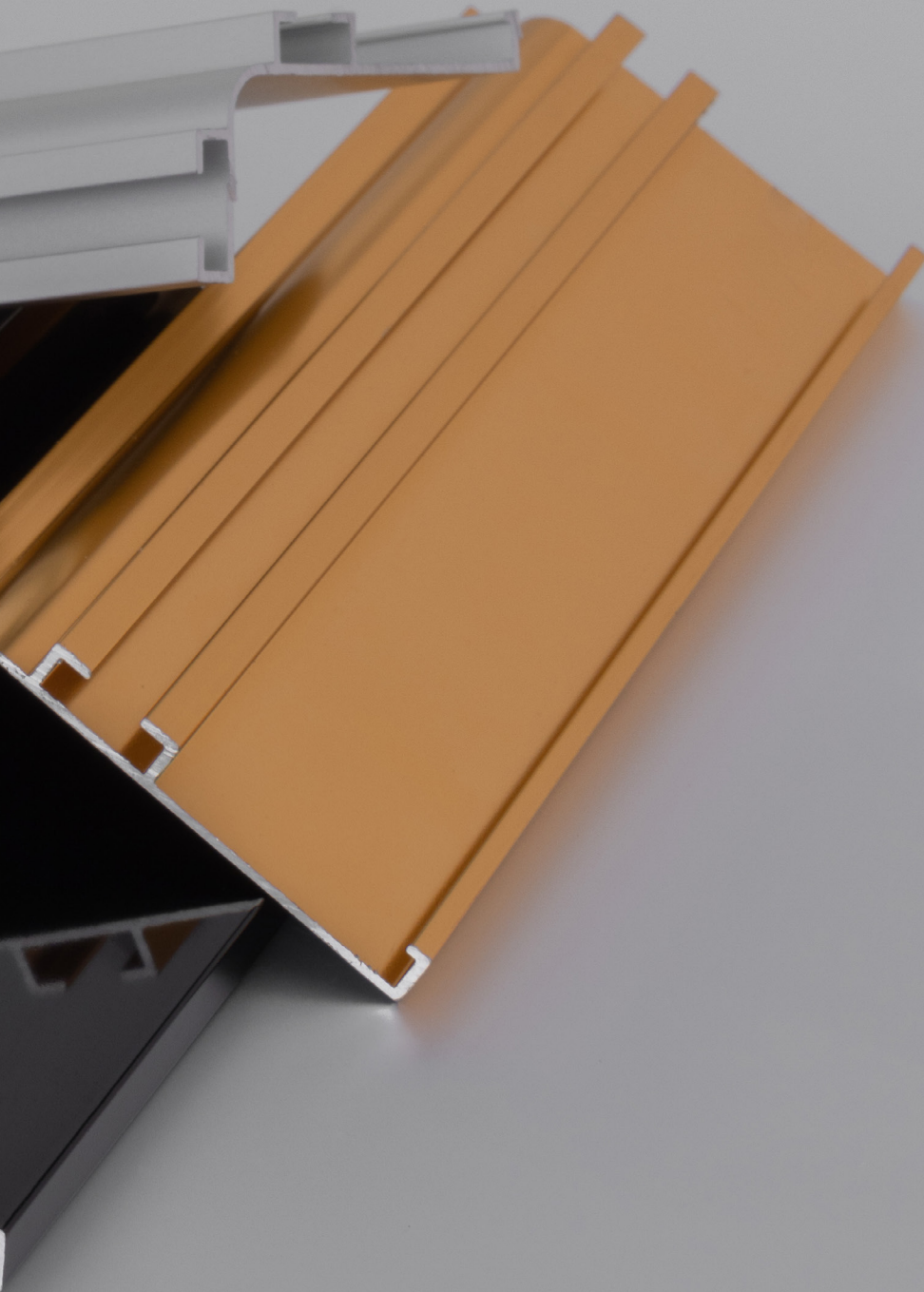


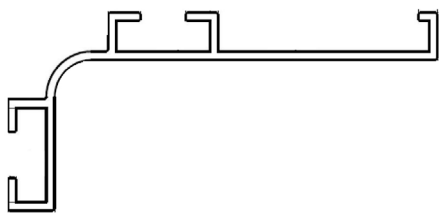
PRODUCT CODE	LAP 026			
MATERIAL	ALUMINIUM EDGE PROFILE-T(3MTR) (12MM)			
FINISH	CP	PROSE	P.GOLD	P.BLACK



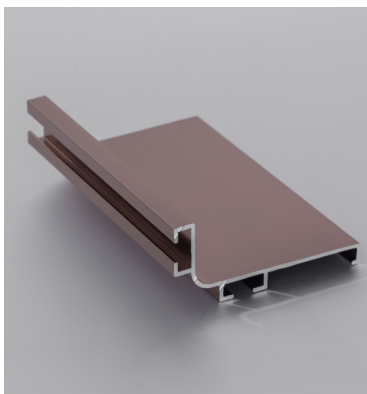
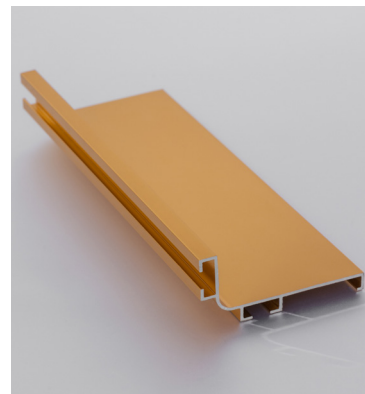
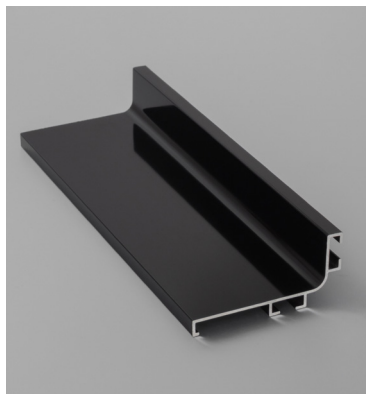
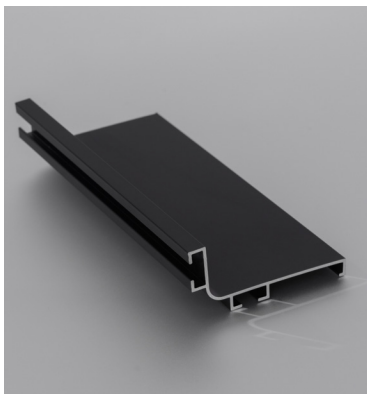
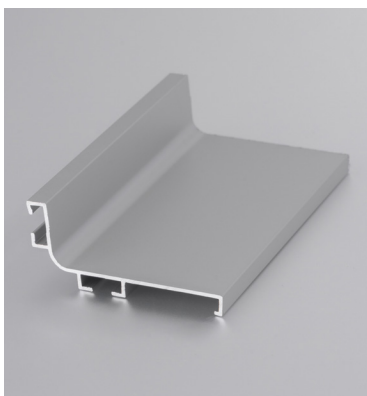


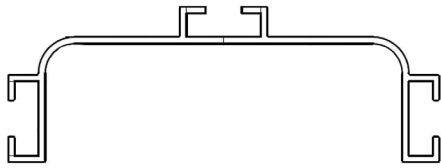
HANDLELESS PROFILES



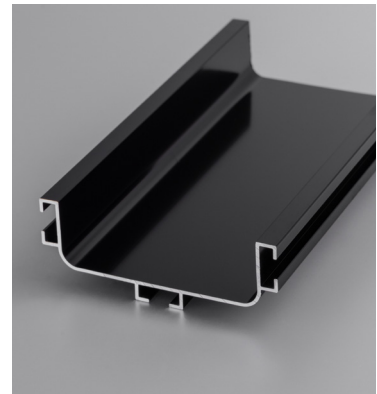
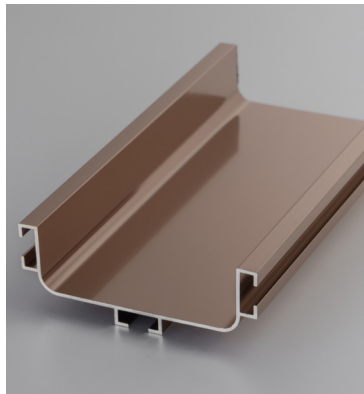
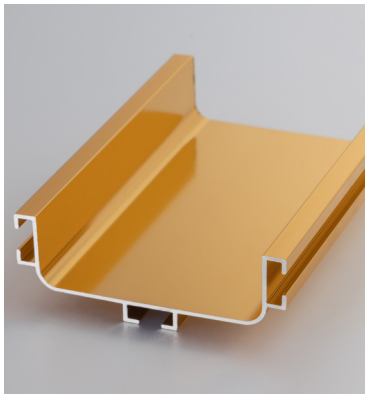
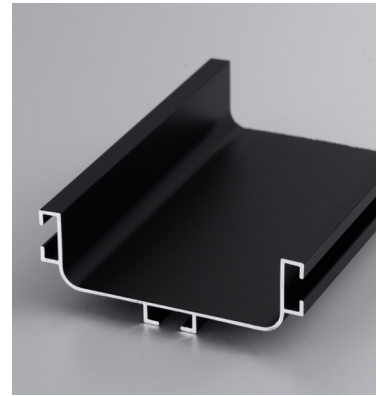


PRODUCT CODE	LAP 029					
MATERIAL	ALUMINIUM PROFILE HANDLESS KITCHEN (3MTR)					
FINISH	ANOD	CP	M.BLACK	P.GOLD	P.ROSE	P.BLACK



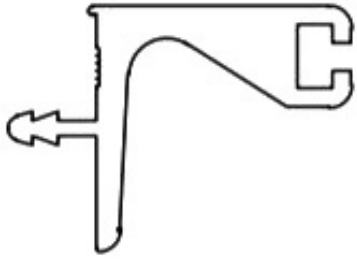


PRODUCT CODE	LAP 030					
MATERIAL	ALUMINIUM PROFILE HANDLESS KITCHEN (3MTR)					
FINISH	ANOD	CP	M.BLACK	P.GOLD	P.ROSE	P.BLACK

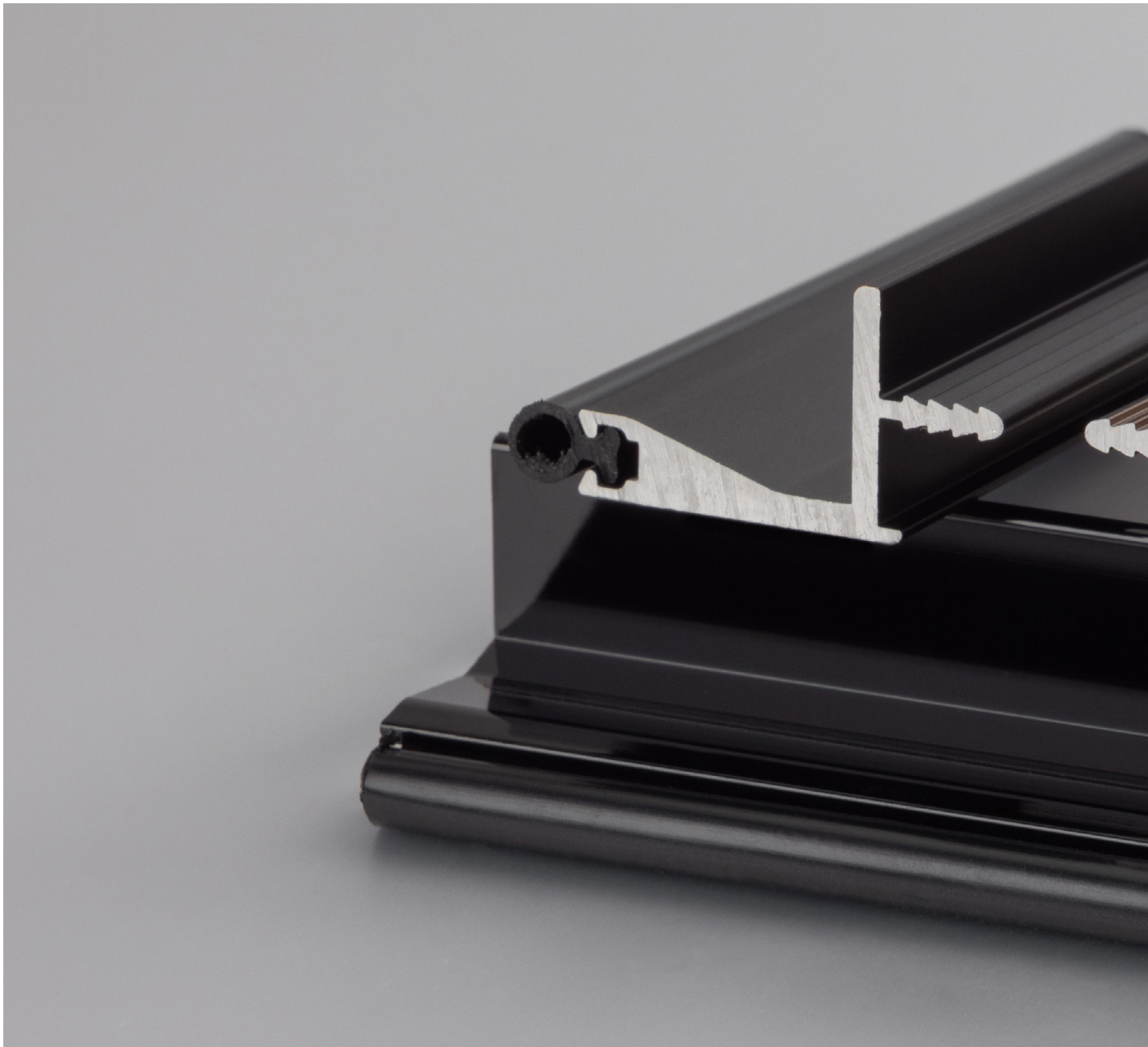


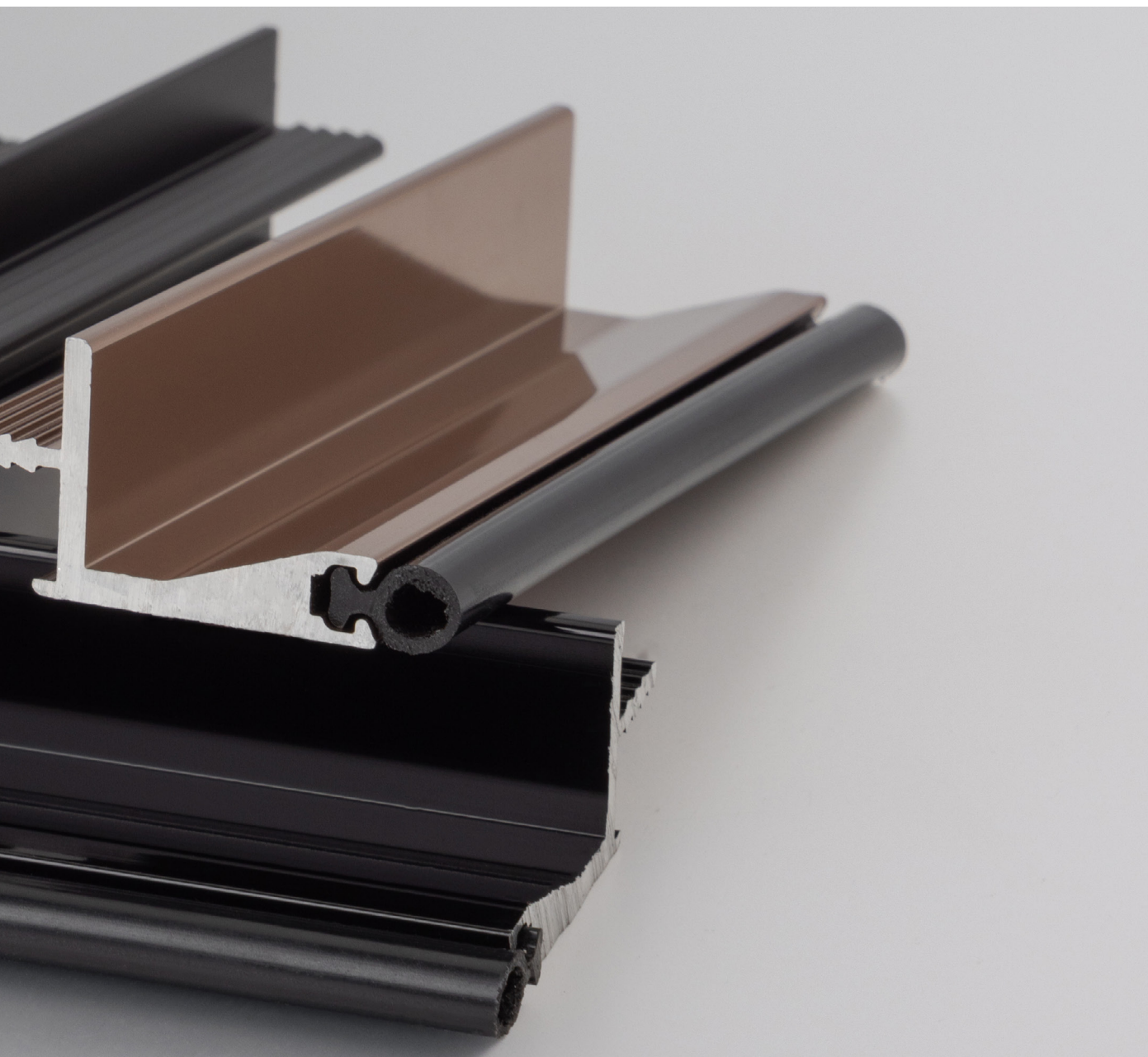
LAPC-003

- Profile connectors provide rigidity and strength to the profiles.
- It comes with a stainless steel screw.
- Profile connectors can be used with LAP-029 and 030.



PRODUCT CODE	LAP 033		
MATERIAL	ALUMINIUM OVERHEAD CABINET PROFILE-HANDLESS KITCHEN (3MTR)		
FINISH	M.BLACK	P.ROSE	P.BLACK





ALL PICTURES SHOWN ARE FOR ILLUSTRATION PURPOSE ONLY



EXQUISITE BOX

Refine your style

Now our customers can make the interior of their furniture look unique with exquisite box. These exquisite boxes ensure smooth running action which closes silently and effortlessly. It gives you an experience of completely harmonious and flawless motion. This sleek and slim design with quality motion comes with a soft close which elegantly fits into your modular kitchen and wardrobe drawer system.



LACB - A

- The design is sleek and slim, which elegantly complements your kitchen and wardrobes.
- The box comes with a quality motion and soft-close mechanism.
- The wide and heavy pull-outs can take a weight load of up to 40 kg.
- Size: height 84 mm.
- Available in silky white and grey colours.





LACB - B

- The wide and heavy pull-outs can take a weight load of up to 40 kg.
- Size: height 167 mm.
- Available in silky white and grey colours.



LACB - C

- The exquisite box combines elegance and functionality to deliver a top-notch drawer system.
- The soft-close mechanism gives quality motion to the box, and can be installed in the usual manner.
- The wide and heavy pull-outs can take a weight load of up to 40 kg.
- Size: height – 199 mm.
- Available in silky white and grey colours.













STORAGE SOLUTION

With clear visibility

Storage Solution by Laarmas offers plenty of storage space, where inner pull-outs are designed individually, which gives easy access to items from all three sides with clear visibility. Storage Solution is a convenient and ergonomic way to store food, toiletries, clothes, etc.

ALL PICTURES SHOWN ARE FOR ILLUSTRATION PURPOSE ONLY





CADDY

Concealed drawers

Laarmas brings to you its holistic range of drawer systems named caddy. Here, installing drawers instead of shuttered cabinets in spaces below the kitchen counter adds convenience in accessibility and provides better ergonomics of working within the kitchen. Caddy makes possible the installation of any application that you have in mind for the kitchen, bathroom, bedroom, living room, or office.

Ingenious concept for systems to suit any application. Convenient, sturdy, smooth-running, attractive. Single or double-walled side profiles in a wide range of options. An extensive range of accessories is optimised for any target group.



CADDY- A 600, 900 & 1200

- The drawer is concealed with full extension, smooth and silent.
- Internal front panel.
- The product will be used with an exquisite box for the internal drawer.
- Available in white and grey colours.

CADDY- B, C,D

- Lower inner drawer front connector.
- CADDY-B will be used with LACB-A
- CADDY-C will be used with LACB-B
- CADDY-D will be used with LACB-C.
- Available in white and grey colours.





CADDY- E 600, 900 & 1200

- Internal front bar used with CADDY-A to elevate the height.
- Used with LACB-B & LACB-C.
- Available in white and grey colours.



KITCHEN ORGANISER

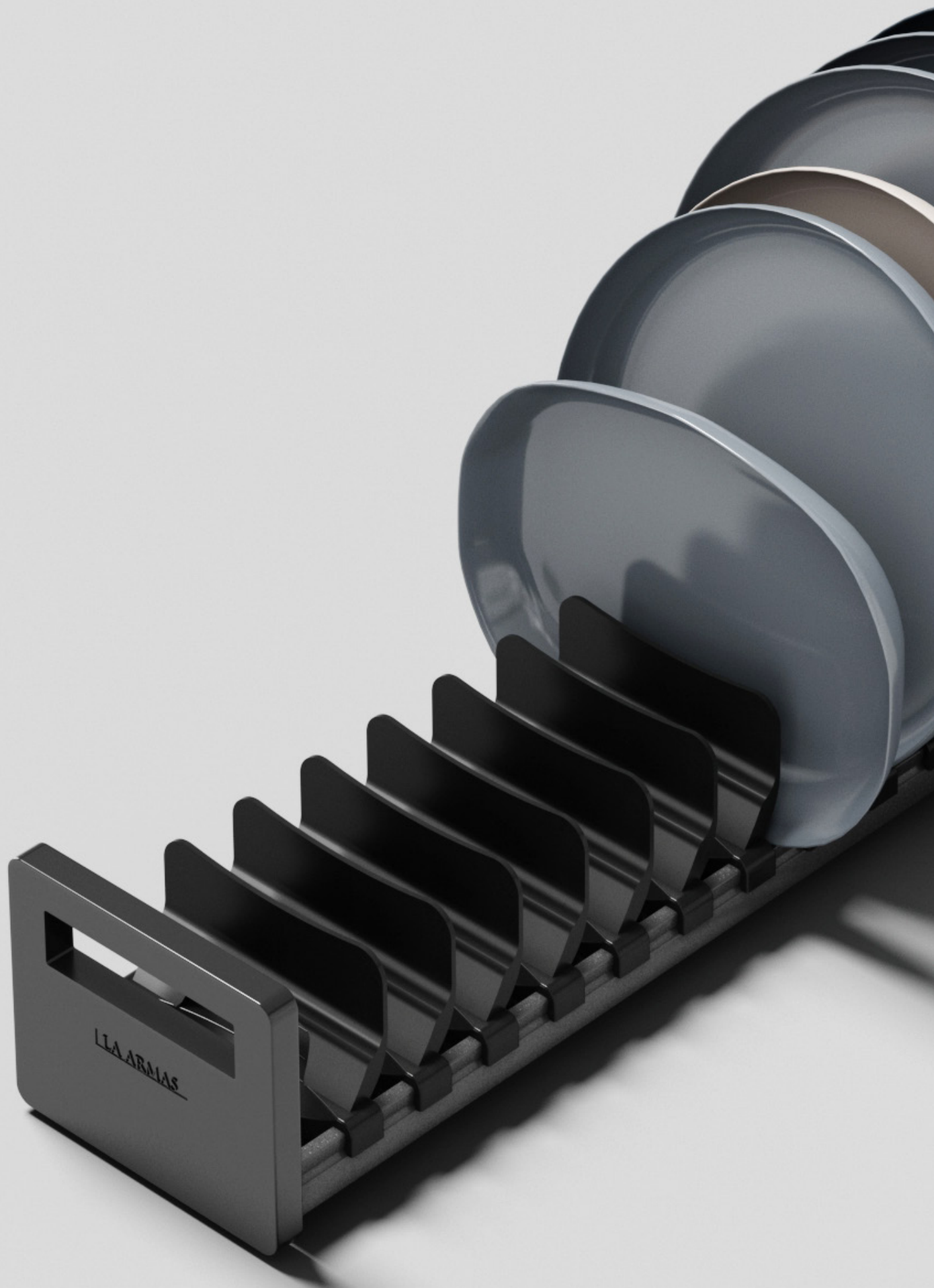
Adjustable storage solution





Kitchen organisers enhance your cooking experience with our adjustable dinnerware. This storage solution features convenient handles on both sides. Whether you prefer it neatly tucked inside a drawer or placed on your countertop, its customisable depth ensures a perfect fit within your drawer's interior dimensions.



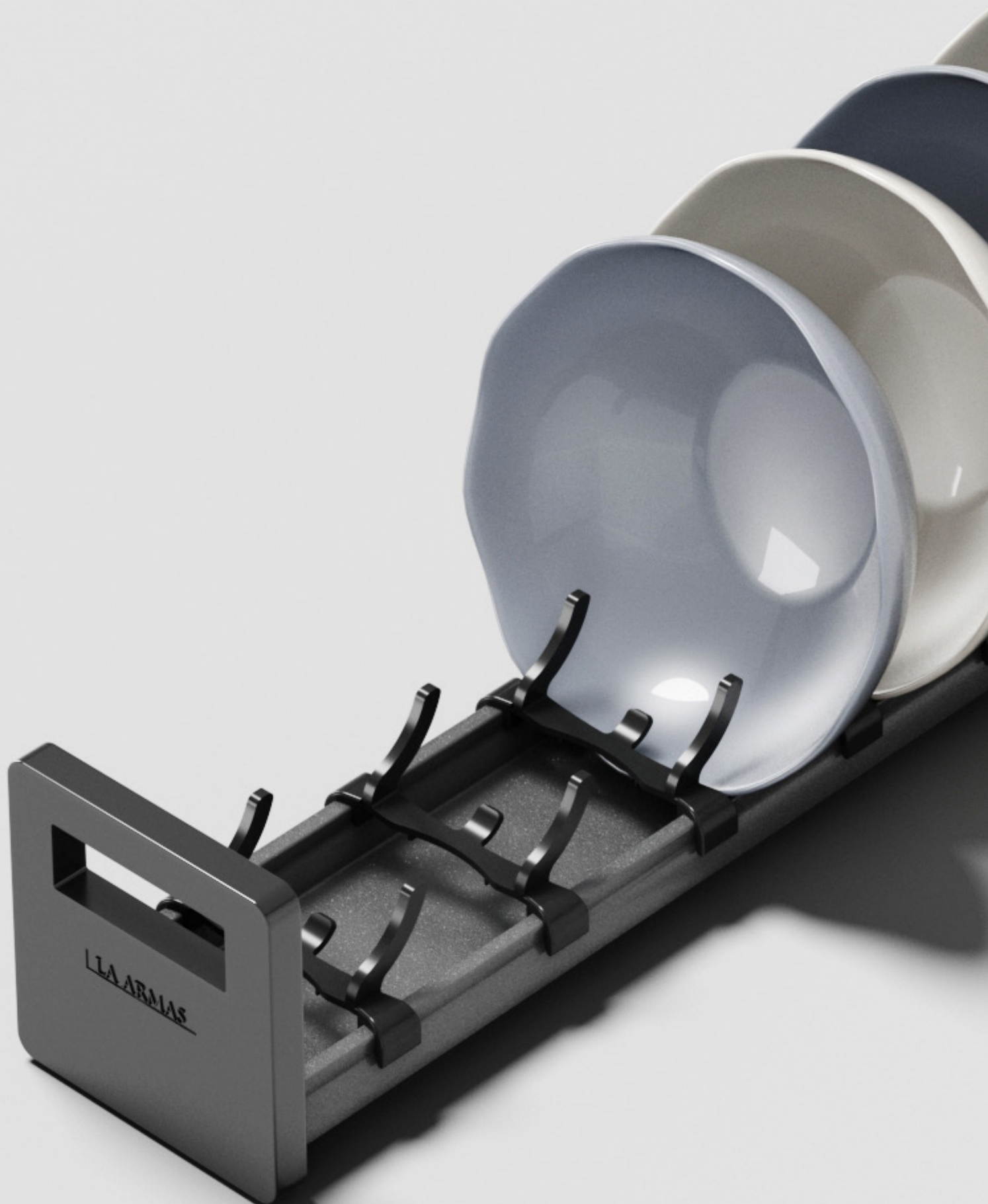




LAKO - 01

PLATE RACK

- The product is named a plate rack.
- It is suitable for use inside drawers and on countertops.
- Adjustable dividers store plates of various sizes.
- Handle design, easy to clean
- The customisable depth can perfectly match the drawer's dimensions.
- Dimensions: 447 mm x 130 mm x 99 mm





LAKO - 02

BOWL RACK

- The product is named a bowl rack.
- It is suitable for use inside drawers and on countertops.
- Adjustable dividers store bowls of various sizes
- Handle design, easy to clean.
- The customisable depth can perfectly match the drawer's dimensions.
- Dimensions: 447mm x 100mm x 99mm.









LAKO - 03

PLATE HOLDER

- The product is named a plate holder.
- It is suitable for use inside drawers and on countertops.
- Adjustable dividers store bowls of various sizes.
- Handle design, easy to clean.
- The customisable depth can perfectly match the drawer's dimensions.
- Dimensions: 447mm x 180mm x 142mm.



LA ARMAS



LAKO - 04

BOWL HOLDER

- The product is named a bowl holder.
- It is suitable for use inside drawers and on countertops.
- Adjustable dividers store bowls of various sizes
- Handle design, easy to clean.
- The customisable depth can perfectly match the drawer's dimensions.
- Dimensions: 447 mm x 120 mm x 142 mm.

A black PVC tray with various kitchen tools organized in compartments. The tray is shown from a top-down perspective. It contains a metal strainer, several knives, a spoon, a fork, and a green brush. The tools are neatly arranged in their respective compartments, demonstrating the organization and accessibility of the tray.

PVC TRAYS

Clear overview & easy access

Organisation meets lifestyle. No mess and confusion; instead, elements are positioned neatly side by side. PVC trays are flexible to use with ample compartments for cutlery. A well-organised drawer unit is meant for you to know exactly from where to find things when you need them and you want to keep them close to hand. Laarmas has created an arrangement which will fit your kitchen tools of any size. We even have built-in knife blocks to store your sharp knives safely and securely! All the contents are perfectly organised for a clear overview and easy access.





LACT - 500

- PVC trays are an elegant and high-value system for drawers.
- As the name suggests, it is made up of inspiring material PVC.
- The tray can easily fit inside the drawer and is equipped with the dividers for keeping cutleries in an organised manner.
- Size Max: width 430 mm x depth 485 mm x height 60 mm.
- Size Min: width 370mm X depth 425mm X height 60mm.
- Available in silver grey & white.

LACT - 600

- Size Max: width 530 mm x depth 485 mm x height 60 mm.
- Size Min: width 470mm X depth 425mm X height 60mm.
- Available in silver grey & white.

LACT - 700

- Size Max: width 630 mm x depth 485 mm x height 60 mm.
- Size Min: width 570mm X depth 425mm X height 60mm.
- Available in silver grey & white.



LACT - 800

- Size Max: width 730 mm x depth 485 mm x height 60 mm.
- Size Min: width 670 mm x depth 425 mm x height 60 mm.
- Available in silver grey & white.

LACT - 900

- Size Max: width 830 mm x depth 485 mm x height 60 mm.
- Size Min: width 770 mm x depth 425 mm x height 60 mm.
- Available in silver grey & white.



BUILT-IN BLOCKS FOR SAFE AND SECURE STORAGE

ALL PICTURES SHOWN ARE FOR ILLUSTRATION PURPOSE ONLY



LAPT-600

- Ranks high on functionality.
- The plate tray facilitates easy access and storage of the entire range of plates.
- Two sectional divisions.
- Size Max: width 540 mm x depth 520 mm x height 60 mm.
- Available in silver grey.



LAPT-900

- Three sectional division
- Size Max: width 840 mm x depth 520 mm x height 60 mm.
- Available in silver grey.





CORNER UNITS

Magical solution for corners

The truly “magic” solution for your corner. Although a corner unit has less to do with magic than it does with cleverness and technical refinement! Magic Corner, a segment of a corner unit, is capable of housing two complete cabinet units next to each other in only one corner cabinet. With one movement, the intelligent sliding technology simultaneously draws the front and the roll-out rack into the user’s view and access area. As expected from Laarmas, we source products that give smooth, silent flowing motion. Closing almost takes place by itself, as well. A slight nudge is sufficient – then Soft Stop ensures a hushed and soft closure.

LASC - 02

RIGHT & LEFT



- Soft close swing corners give soft opening and soft closing.
- The supporting shelf rods are oval in shape, which smooths the look of the product.
- It gives easy access to corner cabinets.
- The suitable cabinet size is 900 mm with a width of 785 mm and a depth of 475 mm.
- It is available in an aqua base and can take a weight load of 20 kg per tray.



LAHC - 01

CLASS

- The soft-close showhand corner unit gives maximum access to the rear baskets in any corner cabinet.
- This corner unit keeps things organised and accessible. The product can be easily installed on either side of the kitchen.
- With the soft-close showhand corner unit, all the corners of the kitchen can be made functional.
- It is a reliable and stylish space storage unit.
- The corner unit comes in an aqua base each basket can take a weight load of 5 kg.
- Cabinet size: 800 mm with width 670 mm and depth 455 mm.



BOTTLE PULL-OUTS

Simply pull

Whatever you're storing – from beverage bottles to groceries – pull-outs are best kept tidy. The Laarmas offers an impressive choice for pull-outs in aqua base which are designed to keep everything in order. It's today's ultimate solution for intelligent storage space utilisation. The modules are side-mounted and under-mounted with two shelves so that they can be easily lifted out and transported. They're so attractive and elegant that you'll want to use them as decorative items. The elegant and removable plate rack with the metal designer grips is another clever accessory for modern dining.



LABP - 200

GLASS

- This bottle pull-out design exhibits sleekness with service, and the way for optimum reach is available through an efficient opening mechanism.
- The pull-out is installed with a soft-close mechanism, which ensures smooth opening and closing.
- This unit comes with two shelves side-mounted to provide stability to the product.
- Available with side walls in toughened glass and a base with an anti-slip Mat.

CLEVER ACCESSORY FOR MODERN DINING

LABP - 300

GLASS

- This pull-out design exhibits sleekness with service.
- The way for optimum reach is available through an efficient opening mechanism.
- Bottle pull-out is installed with a soft-close mechanism, which ensures smooth opening and closing.
- This unit comes with two shelves side-mounted to provide stability to the product.
- Available with side walls in toughened glass and a base with ASM.



PANTRY UNITS

Organisation meets lifestyle

Pantry unit provide a good view of stored items, which can accessed directly from three sides. Removal is carried out conveniently from above. The light operating forces make the pantry unit incredibly convenient to use. Pantry unit can be accessed with impressive ease, provides ample space for provisions and can be tailored to different individual needs, meaning this well-designed pantry unit provides optimum support for every-day kitchen use.





LAPU - 450 GLASS

- The glass pantry unit design combines sleekness & elegance with functionality.
- The integrated damping system ensures soft closing.
- The efficient opening mechanism slides the basket out while opening the cabinet.
- Baskets are adjustable for safe storage with 6 layers on the door and 6 inside.
- Available with side walls in toughened glass and base in ASM.

LAPU - 600 GLASS

- The design exhibits sleekness with service.
- Perfect symmetry allows easy basket adjustment in the cabinet frame. The way for optimum reach is available through an efficient opening mechanism.
- 6 layers of baskets are installed inside and on the door.
- Sturdy rollers can effortlessly handle the overall load of the products stored in pantry unit.
- Available with side walls in toughened glass and base in ASM.



ASTUTE

Extremely flexible

Astute is extremely flexible and very good looking. It highlights the versatility and moves independently of the door so that it can be used effectively in varying cabinet designs, including sliding doors. An Astute is an elegant storage solution not only for contemporary kitchens but also for dining rooms or offices.



ASTUTE

- Astute is a single tube frame with a “floating” shelf design.
- Shelves are infinitely height adjustable and removable with the flip of a latch.
- Soft and silent opening and closing is standard.
- Layer-5 with anti-slip mat.
- Available in toughened glass.
- Weight load: 15 kg per layer.





ROLLER SHUTTER

Aesthetically
appealing

Laarmas brings you the modern kitchen designing – roller shutters. These shutters are an easy and convenient solution to store your appliances. These shutters are aesthetically more appealing because the gap between the slats becomes smaller in the closed state, which gives an attractive look to your kitchen. Roller shutters provide optimum functionality with a high-quality mechanism that ensures a smooth motion. This stylish system requires a flat bottom profile to be fitted in and is ready to be installed in a finished furniture cabinet.



LARS-600

- Roller shutters are an easy and very convenient solution to store your kitchen appliances.
- It is a highly efficient door system with vertical application.
- Aesthetically more appealing design as gaps between the slats become smaller in the closed state.
- The shutter comes with an iron box which ensures smooth motion and gives full access to the storage.
- Cabinet size: width 600 mm x height 1350 mm x depth 320 mm
- Slot size: 35 mm, made up of aluminium.
- These are available in aluminium, SS hairline, white and black.



LARS - 600

GLASS

- The glass shutter comes with a plastic box which ensures smooth motion and gives full access to the storage.
- The superb gliding properties allow smooth and quiet opening and closure of the cabinet.
- Cabinet size: width 600 mm X height 1350 mm X depth 320 mm.
- Slot size: 50 mm, made up of tempered glass.
- These are available in white and black.





WASTEBINS

For a healthy kitchen

Laarmas provides kitchen waste bins which are hygienic and comfortable to use. The waste bin comes in two categories, where in one, the waste bin container swings out automatically while opening the door. The other bin comes with two compartments fitted at the area below the sink. The division are provided with access to wet and dry compartments separately, which open at the sink side on the kitchen top. Laarmas provides the design which relieves you from leaning down every time to throw the waste. The waste bins are easily removable, as Laarmas aims to make your kitchen safe and healthy.



LADB-14

- The wastebin container swings out automatically while opening the door.
- No additional loading on the front.
- The lid of the wastebin rises up while opening and moves back snugly against the container upon closing.
- The waste bin is attached to the cabinet door, which saves floor space.
- The waste bin has storage capacity for 14 L.

RELIEVES FROM
LEANING DOWN
TO THROW THE WASTE





LADB-30

- The design is compact and space-saving for installing in the sink base cabinet.
- It is a stable frame construction.
- The advanced sliding mechanism automatically slides the bin out while opening the cabinet door.
- Pull-out runners ensure smooth running.
- Smart design allows clean and hygienic waste separation.
- Simple floor mounting.
- The waste bin has storage capacity for 20 L + 10 L.
- Size: width 260 mm x depth 490 mm x height 430 mm.



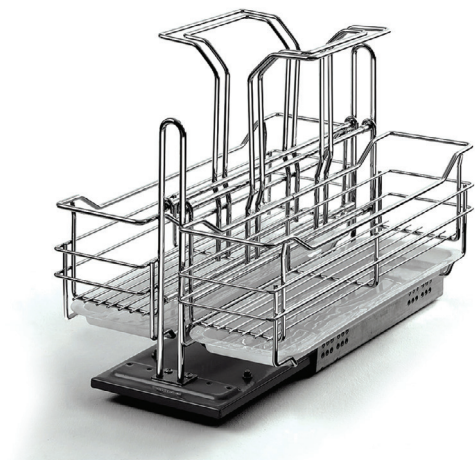
LADB-40

- The wastebin is attached to the door.
- Smart and space-saving design to maintain your kitchen hygiene.
- It can be installed in the sink base cabinet under the syphon.
- It is a stable frame construction.
- The wastebin automatically slides out while opening the cabinet door due to the advanced sliding mechanism.
- Pull-out runners guarantee smooth running of the bin.
- The divided storage amongst the wastebin ensures the dry and wet waste separation, hence keeps your kitchen clean and hygienic.
- Simple floor mounting.
- Wastebin has storage capacity for 20 l + 20 l.
- Size: width 340 mm x depth 490 mm x height 430 mm.

LIQUID RACK

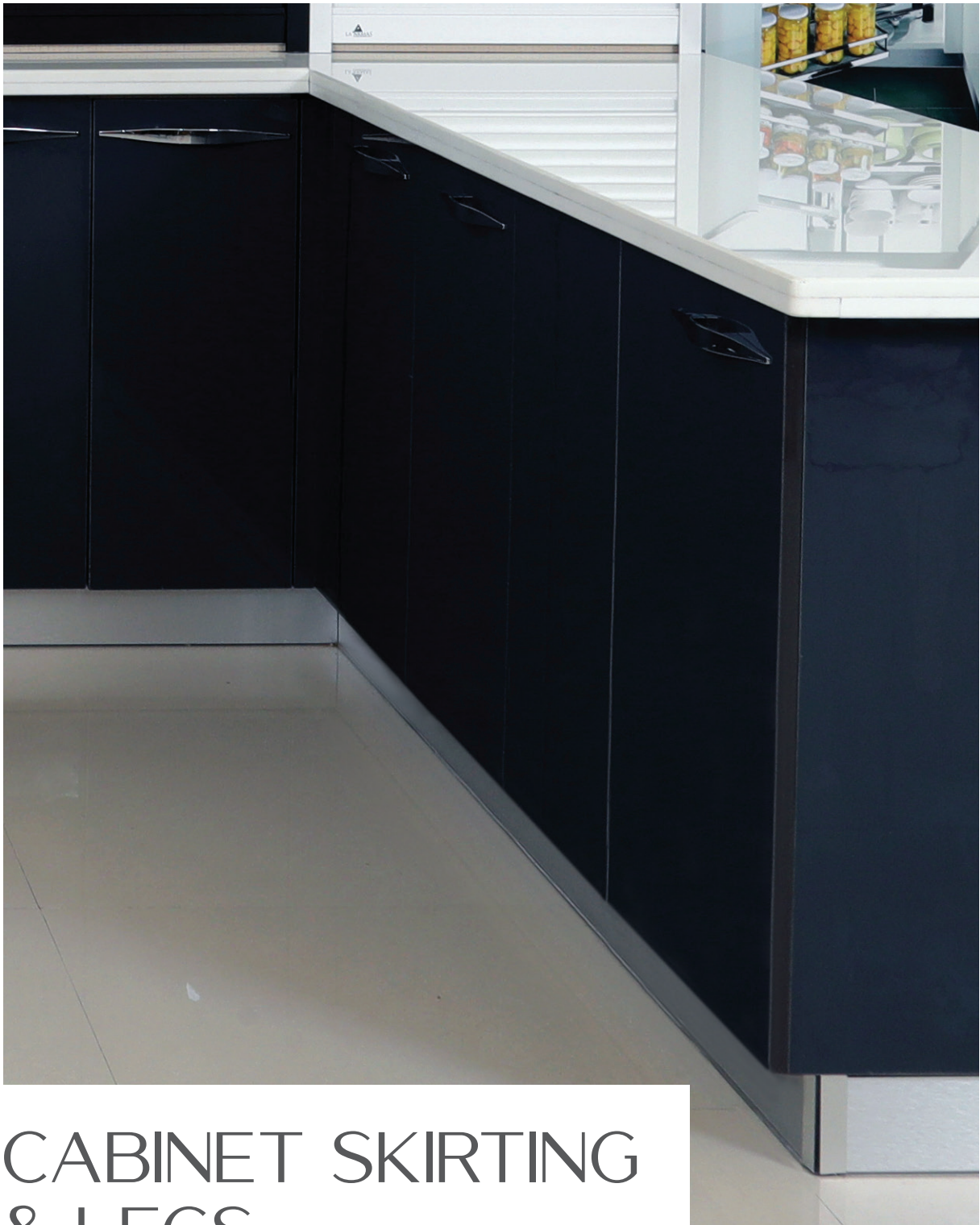
Convenient & smart storage

Laarmas introduces a new pull-out and storage system for your cleaning agents, such as detergents, liquid cleaners, etc. This liquid rack adds convenience and functionality to our customer's lifestyle. This new rack snugly fits into the under-sink cabinet and proves to be an ideal and smart storage solution for the products. The rack can be easily accessed as it slides out while opening the cabinet door.



LALR-350

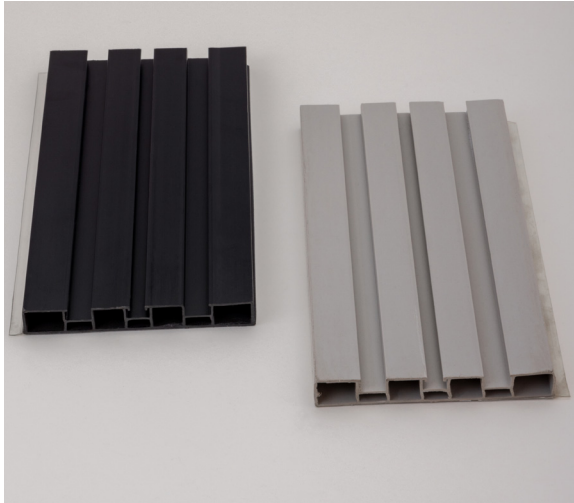
- A new storage system for the detergents and cleaning agents.
- The liquid rack gives convenient access to cleaning material.
- The liquid rack is base mounted, as it is fixed on the base of the under-sink cabinet.
- The rack is designed with a soft-close mechanism.
- The basket slides out easily while opening the cabinet door through advanced opening mechanism.
- Pull-out runners guarantee smooth running of the rack.
- The divided rack ensures the smart storage as per the customer's requirement.
- Cabinet size: 350 mm
- Size: width 285 mm x depth 467 mm x height 415 mm.



CABINET SKIRTING & LEGS

Stabilises your cabinets

Cabinet skirtings are mainly used in the kitchen cabinet to avoid dust and water settling below the cabinet. It is a very simple system which is clipped onto the cabinet legs. Laarmas brings the cabinet skirtings, which are available in aluminium and white finishes. Flexible connectors are used to join their skirtings at the corners. At the same time, cabinet legs are also used to level out the irregularities in the carcass and make the entire cabinet stand on the same plane.



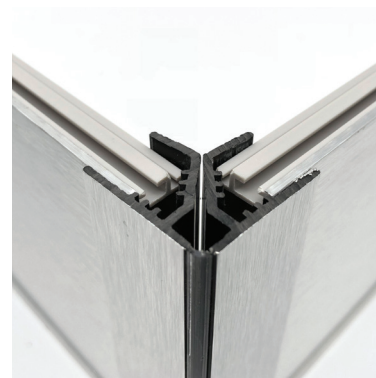
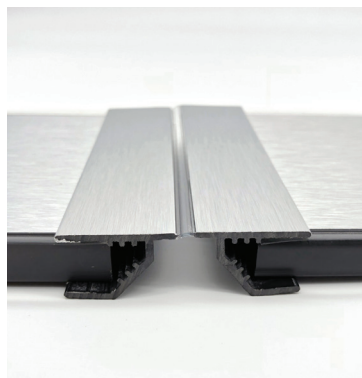
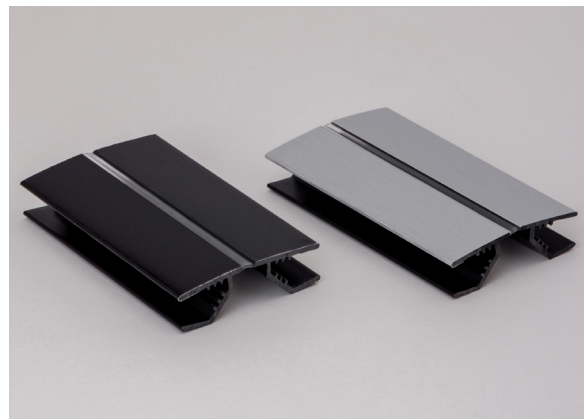
LACS-ALU & WHITE

- Cabinet skirting is a very simple system which is clipped onto the cabinet legs.
- Cabinet skirting avoids dust and water from settling below the cabinet.
- They are equipped with the rubber seal to prevent water from getting under the kitchen cabinet.
- Skirting is available in aluminium and white finishes.
- Length 3 mm per piece and height 100 mm.



LAFC-ALU & WHITE

- Flexible connectors are used to join these skirtings at the corners.
- Connectors are available in silver brushed aluminium and white finishes.
- The middle soft strip is fixed, and it gives strength to the connector.
- Available in white, black and aluminium.



SKIRTINGS
ARE EQUIPPED
WITH THE
RUBBER SEAL,
CABINET LEGS
ADDS STABILITY





LACL-01

- Cabinet legs are also used to level out the irregularities in the carcass.
- Cabinet legs make the entire cabinet stand on the same plane.
- It adds stability to the kitchen by adjusting height from 100 to 130 mm.
- Cabinet leg comes with clip.
- It can take a weight load of up to 120 kg.



LACL-02

- Cabinet legs from Laarmas help hold cabinet weight easily.
- Cabinet legs make the entire cabinet stand on the same plane.
- It adds stability to the kitchen by adjusting height from 100 to 130 mm.
- Cabinet leg comes with clip.
- It can take a weight load of up to 80 kg.

GAS SPRING

Slim and precise

Advanced, slim, precise. The most advanced lifter in the market to meet all the criteria for looks and functionality. Aesthetics is an emotional criterion that even technical products must achieve today. Gas springs have to perform perfectly and look beautiful too. The slim and elegant look of a gas spring underlines the obvious advantages of Laarmas high-precision quality.



LAGP-5, 10, 15, 20, 25

- Gas springs are a new design with a high-quality opening system.
- Automatic door opening allows the door to open to the fullest, whereas open angle adjustment is carried out by the hand through the rotary knob for the door alignment.
- The installation of the product is quick and easy and can be used for wooden and aluminium-framed shutters.
- It opens at an angle of approximately 90 degrees and can take flap weight from 5 to 25 kg.



GAS SPRING SOFT CLOSE









LAGP-5, 10, 15 SOFT CLOSE

- Gas springs are a new design with a high-quality opening system.
- Automatic door opening allows the door to open to the fullest, whereas open angle adjustment is carried out by the hand through the rotary knob for the door alignment.
- The installation of the product is quick and easy and can be used for wooden and aluminium-framed shutters.
- It opens at the angle of 90 degree approximately.



BED FITTINGS

Storage under bed

The most sophisticated lifter - bed fitting is available that satisfies all aesthetic and practical requirements. Even technical items nowadays need to meet the emotive requirement of aesthetics. Bed fittings must function flawlessly for heavy-duty beds. A gas spring's slender and sophisticated appearance highlights the clear benefits of Laarma's high-precision manufacturing.



LABF

WEIGHT LOAD-100, 125, 150, 175, 200

- Ideal for storage under bed.
- Convenient open angle for users to access maximum storage space with convenience.
- Moving the arm to be fixed with the fixed body of the bed top.
- The fixed arm is to be fixed parallel to the moving body.
- Gas spring to be selected according to moving arm length and load capacity.
- Special gas spring available in 5 different loads.
- A 36° opening angle allows easy access.
- Weight loading capacity: 100 kg, 125 kg, 150 kg, 175 kg, 200 kg.

DISH RACK

Organisation meets lifestyle

The Dish Rack is a combination of a dish rack and a dish drying tray all in one. Laarmas focuses on practicability but also on the latest fashion elements applied in designing functional hardware. It is an innovative idea designed with a stainless steel draining board. The model has tonnes of specialised features to dry different types of things, from silverware to glasses to small and large plates. It fits a whole sink full of dishes at once.



OPTIMUM FUNCTIONALITY WITH HIGH QUALITY MECHANISM



LADR-600, 800, 900

- The dish rack can be used as a dish rack and dish drying tray.
- Rinsing can be done by arranging items on the dish rack and then spritzing with clean water.
- Different types of things, from silverware to glasses to small and large plates, can be dried in a dish rack.
- It fits a whole sink full of dishes at once.



EVA ANTI SLIP MAT

Get a grip on kitchenware

EVA Anti Slip mats are an excellent product for placing in each drawer, cabinet shelves etc. These mats are coated with an anti-slip surface below, which provides high grip to the products kept over it. Dishes, utensils, cutleries, spice bottles, etc., do not collide with each other when they are kept on an EVA anti-slip mat. These mats are made up of non-toxic material, and they are safe for use anywhere in the house.

LASM-01

- EVA anti-slip mats can be used for placing in drawers, cabinet shelves, etc.
- The mats are coated with an anti-slip surface below which provides high grip to the products.
- Eva anti-slip mats do not let dishes, utensils, cutleries, spice bottles, etc., collide with each other.
- These mats are made up of non-toxic material, and they are safe to use
- The mat is available in grey colour.
- Size: Width 500 mm and length 5000mm.

HYDRAULIC HINGE

Brings proper functioning

A hinge is a piece of hardware vital to the proper function of a cabinet door. The two primary categories for hinges are visible and invisible. A visible hinge will usually consist of two leaves held together by a barrel-and-pin knuckle that allows the pieces to move in a linear direction. Partially concealed hinges will only have the knuckle visible at the seam of the door where it aligns with the cabinet face frame. Invisible hinges are set within the door and are completely concealed while the cabinet is closed.





LAHH - 01/0°

- The product gives our customers an easy opening and good access.
- It has been a consistent design used in the cabinet fittings.
- It is a full overlay.
- The product is fully made up of metal with two finishes – nickel plated and black nickel plated.
- The soft-close mechanism leads to smooth opening & closing of cabinet doors.
- The clip-on mounting plate helps in 3D adjustment of the hinge.
- Hole distance on hinge cup: 48 mm.
- Diameter of hinge cup: 35 mm.





LAHH - 02/80

- It is an extensive hinge programme that offers the right solution for any application.
- Hinge can be easily assembled and removed; also, 3D adjustment can be done with the help of a clip-on mounting plate.
- It has been a consistent design used in the cabinet fittings, as it comes with a soft-close mechanism.
- The product is half overlay with 2 finishes – nickel plated and black nickel plated.
- Hole distance on hinge cup: 48 mm.
- Diameter of hinge cup: 35 mm.



LAHH - 03/15°

- This hydraulic hinge gives an effortless closing to the furniture with a soft-close mechanism.
- 3-dimensional adjustment can be done with the help of a clip-on mounting plate.
- The product is an inset door and made up of metal. It comes in two finishes – nickel plated and black nickel plated.
- Hole distance on hinge cup: 48 mm.
- Diameter of hinge cup: 35 mm.









LAHH - 04/0°

- It is a full overlay, and the product is fully made up of metal and nickel plating.
- The soft-close mechanism leads to smooth opening & closing of cabinet doors.
- The clip-on mounting plate helps in 3D adjustment of the hinge.
- Hole distance on hinge cup: 52 mm.
- Diameter of hinge cup: 40 mm.



LAHH - 05/8°

- It is half overlay, and the product is fully made up of metal and nickel plating.
- The soft-close mechanism leads to smooth opening & closing of cabinet doors.
- The clip-on mounting plate helps in 3D adjustment of the hinge.
- Hole distance on hinge cup: 52 mm.
- Diameter of hinge cup: 40 mm.



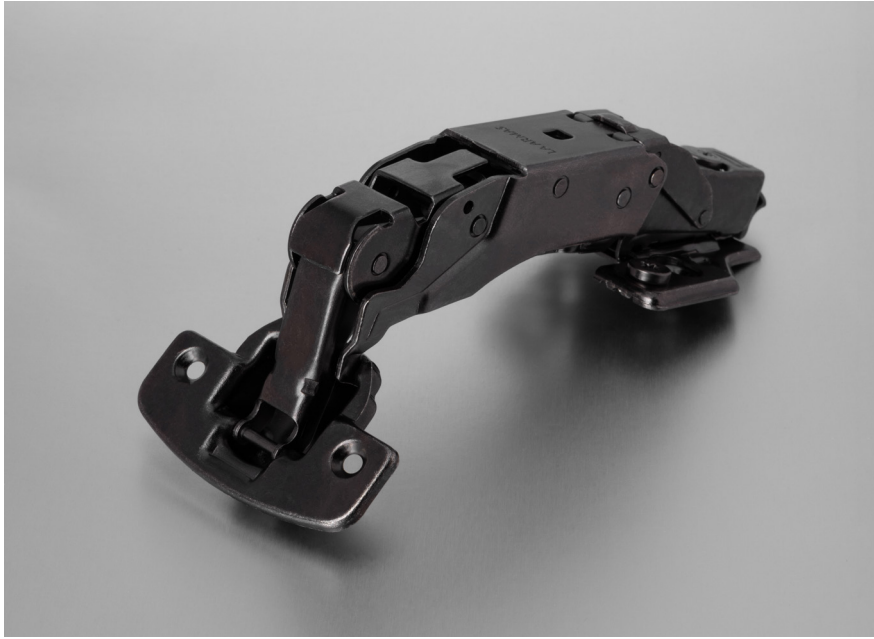
LAHH - 06/15°

- This hydraulic hinge comes with a soft-close mechanism.
- 3-dimensional adjustment can be done with the help of a clip-on mounting plate.
- The product is an inset door and is fully made up of metal and nickel plated.
- Hole distance on hinge cup: 52 mm.
- Diameter of hinge cup: 40 mm.



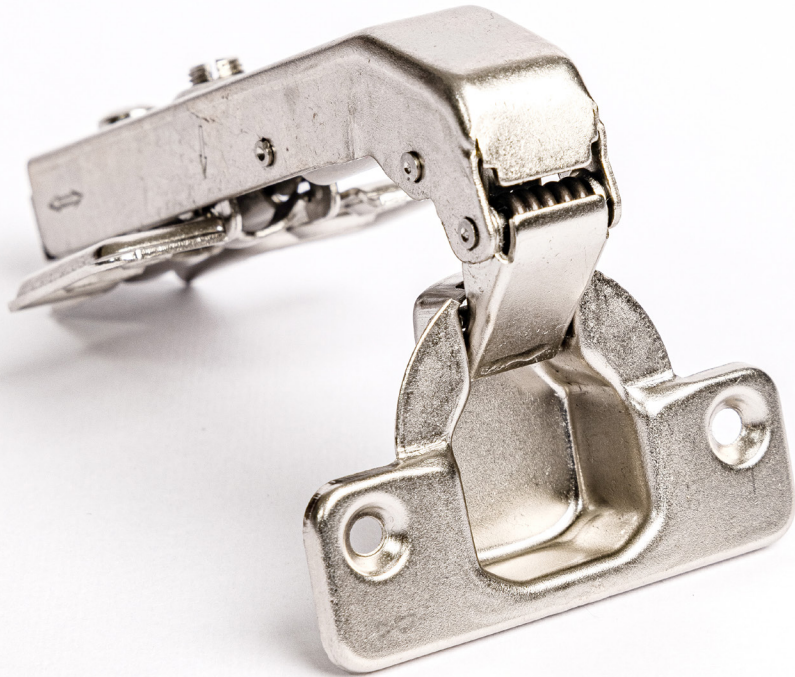
LAHH - 07

- This hydraulic hinge moves 165 degrees with a soft-close mechanism.
- 3-dimensional adjustment can be done with the help of a clip-on mounting plate.
- The product is made of metal and nickel plated.
- Hole distance on hinge cup: 35 mm.
- Diameter of hinge cup: 48 mm.



LAHH - 08

- This hinge moves 135 degree.
- 3dimensional adjustment can be done with the help of clip on mounting plate.
- This product is made up of metal and nickel plated.
- Hole distance on hinge cup: 35mm
- Diameter of hinge cup: 48mm.



LAHH - 09

- This hydraulic hinge comes with a soft-close mechanism.
- Blind corner hinge.
- 3-dimensional adjustment can be done with the help of a clip-on mounting plate.
- This product is made of metal and nickel plated.



LAHH - 10

- It is a full overlay.
- The product comes in two finishes – nickel plated & black nickel plated.
- Hinge can be easily assembled and removed; also, 3D adjustment can be done with the help of a clip-on mounting plate.
- The soft-close mechanism leads to smooth opening & closing of cabinet doors.



LAHH - 11

- It is half overlay.
- The product comes in two finishes – nickel plated & black nickel plated.
- Hinge can be easily assembled and removed; also, 3D adjustment can be done with the help of a clip-on mounting plate.
- The soft-close mechanism leads to smooth opening & closing of cabinet doors.



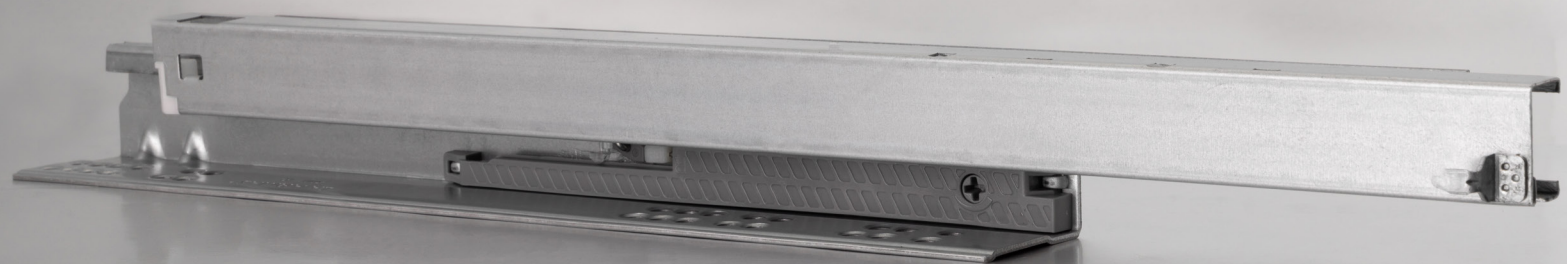
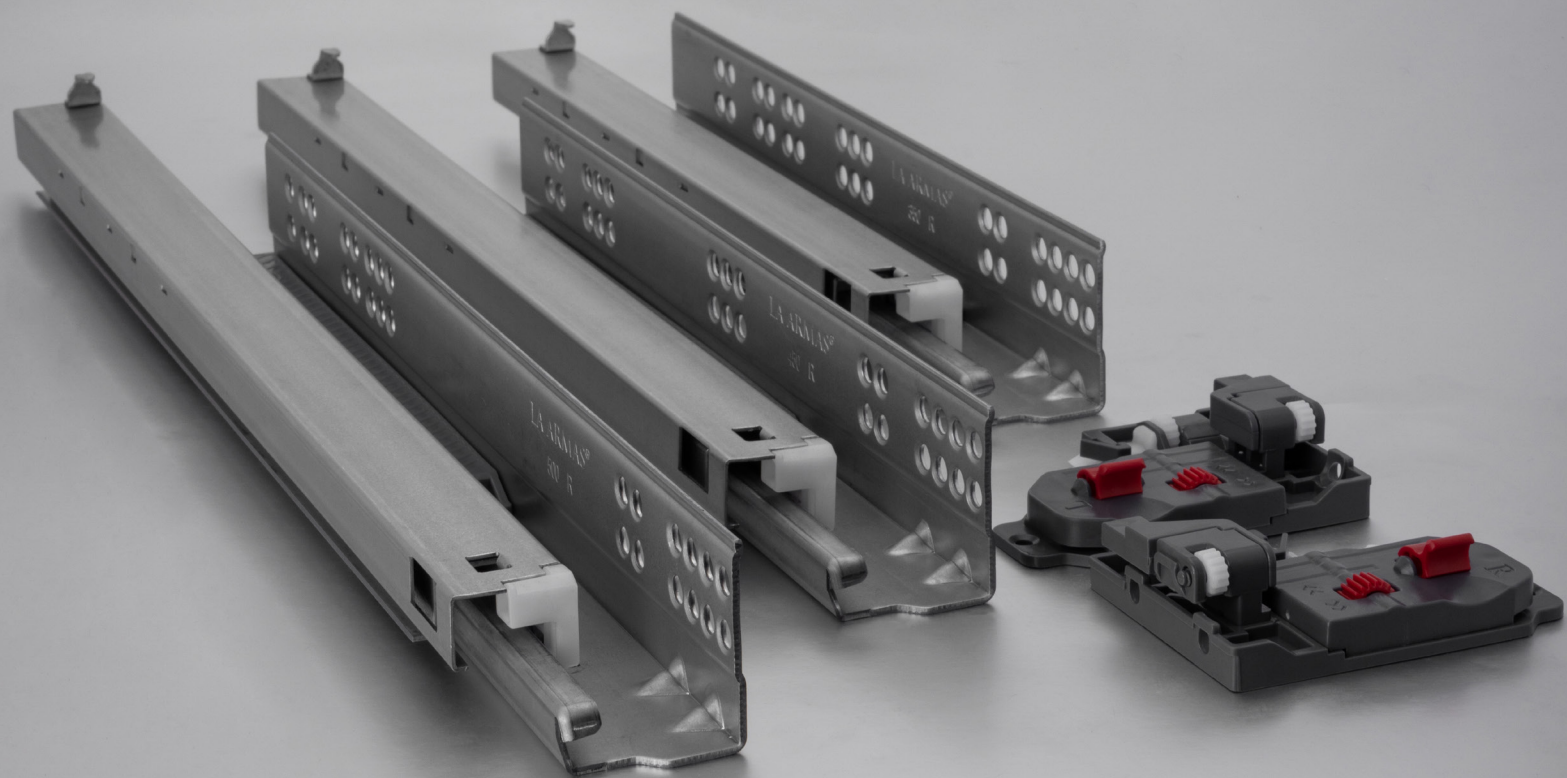
DRAWER RUNNER

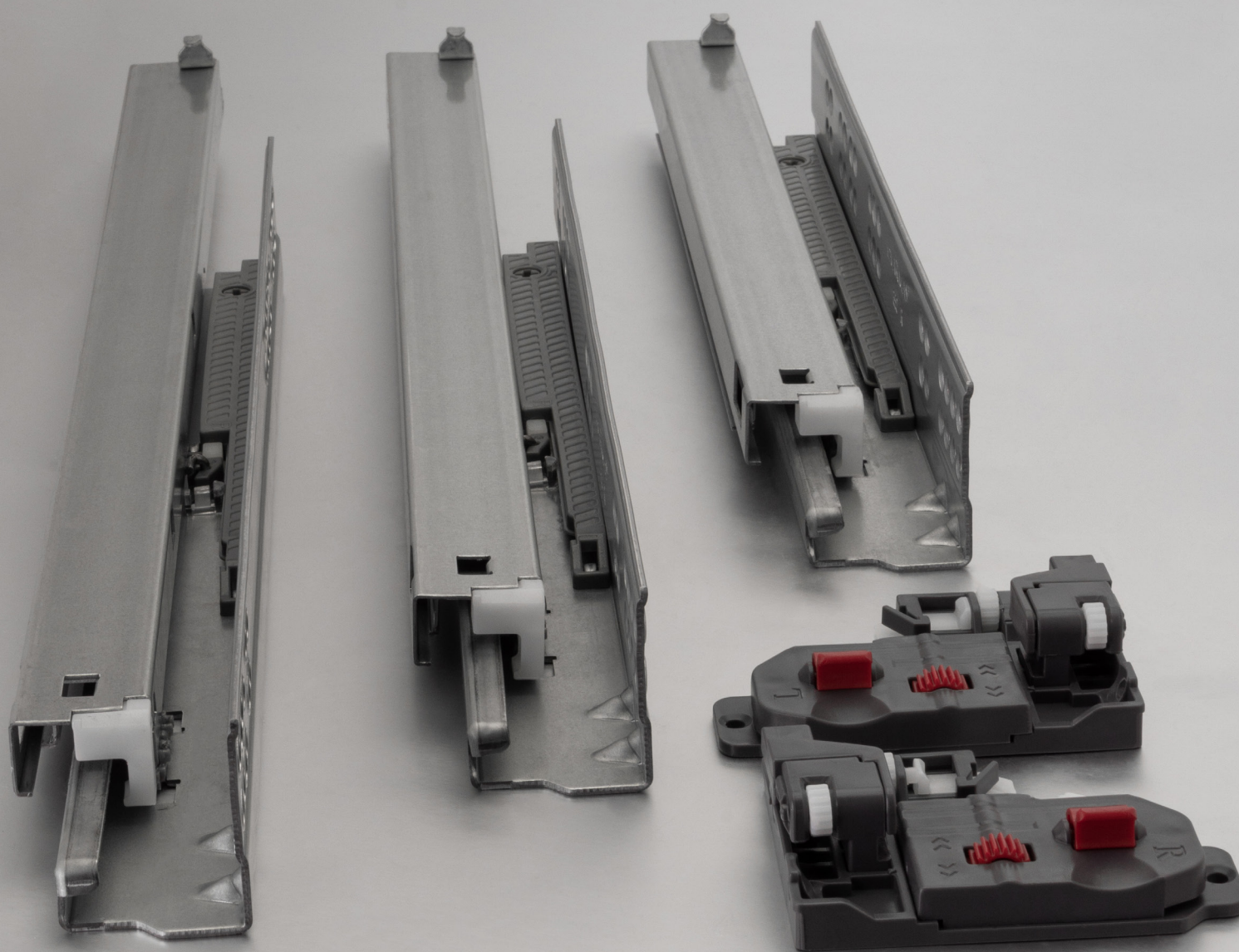
Motion with fluidity

Drawer runners are small devices that are used to facilitate the fluid motion during the opening and closing of the drawer. The addition of a drawer runner requires that the fitting area, if a drawer, be expanded, but it also ensures smooth motion. To increase control over the drawer's movement, an obstruction is moulded into the guide track's path. This obstruction acts as a stopper to the drawer by inhibiting the small wheels of the runner system from completely exiting the end of the track.







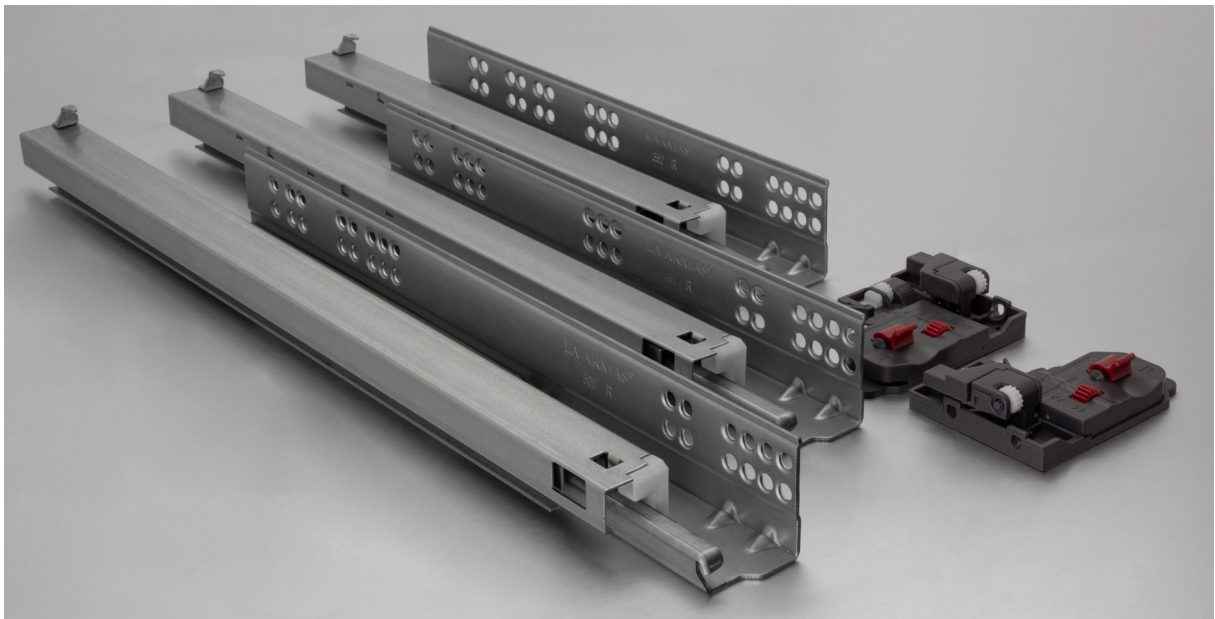


QUADRO SLIDE
SYNCHRONISE

LAWQ

QUADRO SLIDE - SYNCHRONISE

- The slide can be fully extended.
- It is a heavy-duty slide with a 53 mm width.
- The slide is very durable, as it can function with minimum maintenance in the most challenging environment.
- It can take the weight load of 40 kg.
- Size: 250mm, 300mm, 350mm, 400mm, 450mm, 500mm, 550mm.







LATTS - 01

- The slide comes with a premium quality telescopic channel with double zinc.
- The slide can be extended fully and detached.
- The slide is very durable, as it can function with minimum maintenance in the most challenging environment.
- It can take the weight load of 35 kg.
- Size: 200mm-550mm.



LATS - 02

CLASS

- The drawer can be easily unlatched and detached from the slides.
- This slide comes with a pull-out stop and rollout prevention.
- The slide functions smoothly with high side stability.
- It can take the weight load of 45 kg.
- Size: 250mm-550mm



LATS - 03

CLASS - SOFT CLOSE

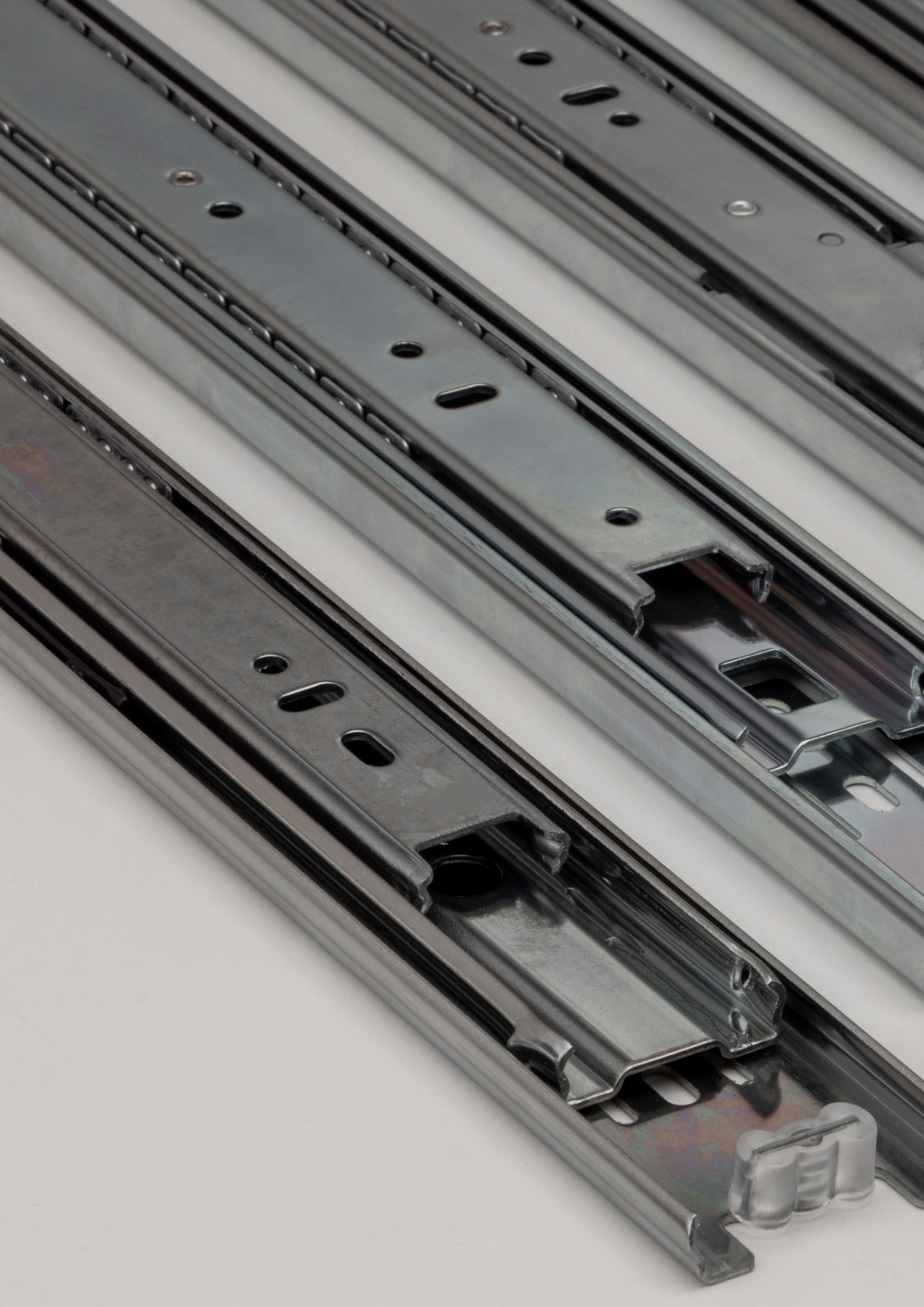
- This slide offers a drawer running till the end of the damper buffer effect.
- The slide functions smoothly with high side stability.
- The drawer closes quietly due to the soft-close mechanism.
- The slides need minimum force for functioning.
- It can take the weight load of 35 kg.
- Size: 350mm-550mm.



LATS - 05

MEGA SLIDE - CLASS

- The slide can be fully extended.
- It is a heavy-duty slide with a 53 mm width.
- The slide is very durable, as it can function with minimum maintenance in the most challenging environment.
- It can take the weight load of 100 kg.
- Size: 450mm, 500mm, 550mm, 750mm, 800mm, 850mm, 900mm.





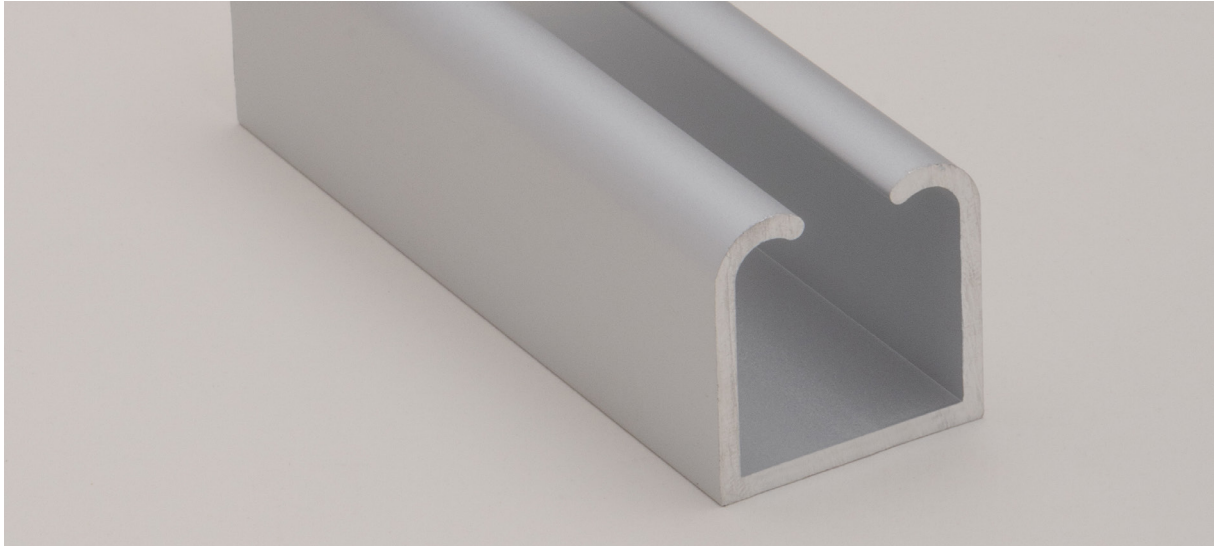
OPTIMUM FUNCTIONALITY
WITH A HIGH-QUALITY
MECHANISM



DOOR SLIDING

Completely accessible

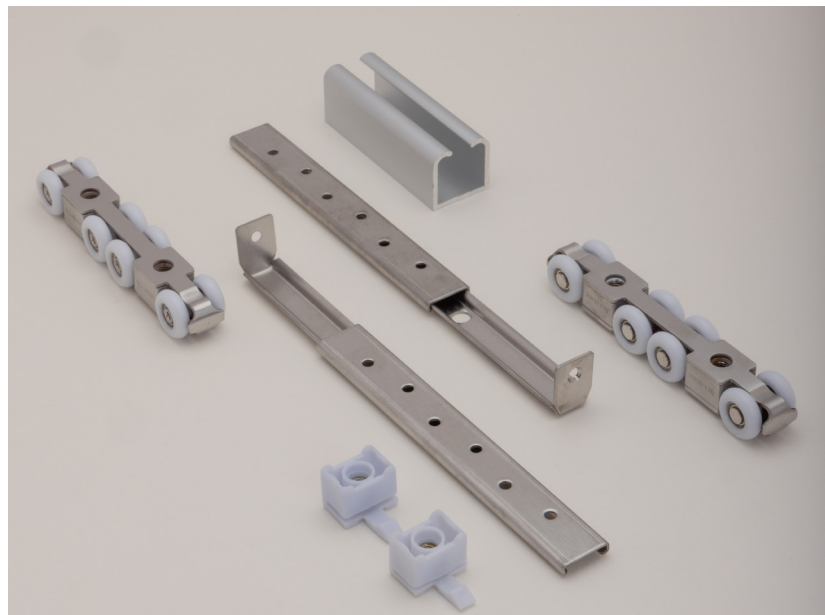
Door sliding is used for doors that open horizontally, more often than not in applications that divide two rooms. Apart from the obvious aesthetic appeal that sliding doors represent, they also carry a host of functional benefits like ease of accessibility, floor-space efficiency and, most importantly, the realisation of wide openings.



PRODUCT CODE	MATERIAL	SIZE	USED	FINISH
LAP 001	ALUMINIUM SLIDING PROFILE	2 MTR, 2.5 MTR & 3 MTR	LASD-02 & LASD-03	ANODISED ALUMINIUM

LASD - 02

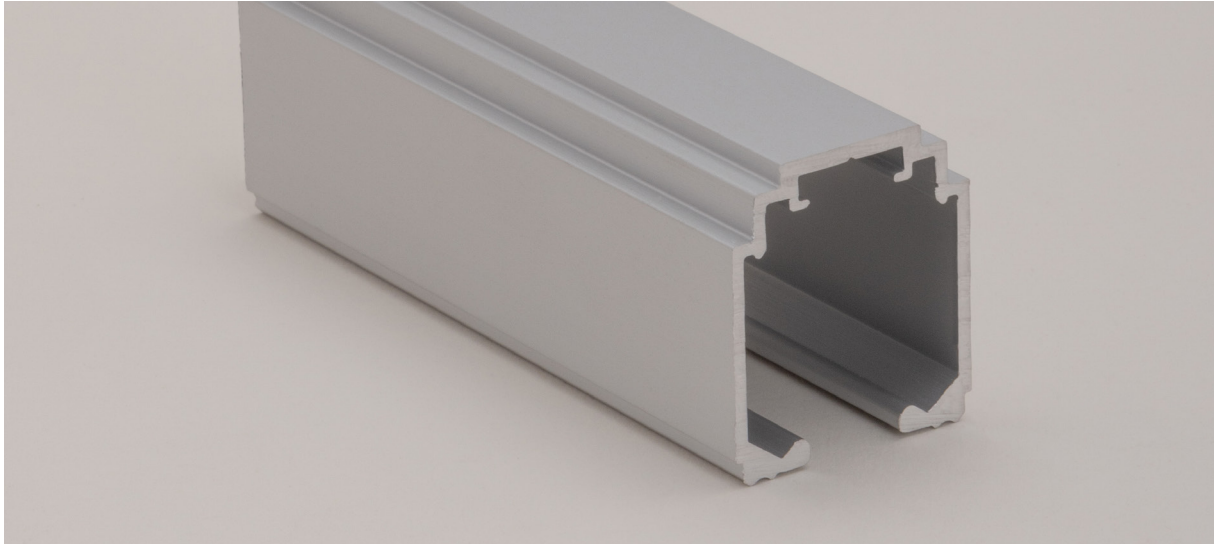
- This roller contains 8 wheels.
- The rollers are made up of stainless steel.
- Weight load: 60 kg.



LASD - 03

- This roller contains 12 wheels.
- The rollers are made up of stainless steel.
- Weight load: 80 kg.





PRODUCT CODE	MATERIAL	SIZE	USED	FINISH
LAP 101	ALUMINIUM SLIDING PROFILE	2 MTR, 2.5 MTR & 3 MTR	LASD-04	ANODISED ALUMINIUM



LASD - 04

- This roller is used for sliding doors.
- It comes with a soft-close on both sides.
- The rollers are made up of zinc.
- Weight load: 60 kg.



MAGNET DOOR HOLDER

Desirable opening and closing





Magnet door holders are sturdy, practical and easy to install; they stop and hold doors when open in a heavy wind. Mount either vertically to the floor or horizontally to the baseboard or wall. The magnetic door holder comes with a strong magnetic catcher to prevent the door from slamming shut and ensure the door stays in the open position as desired. The package contains standard bolts. Some doors might need longer bolts, which are optional and based on the customer's preference. It is a considerable product.



LADH - 01

- The magnetic door holder is made up of stainless steel.
- The door holder is in a square shape.



LADH - 02

- The magnetic door holder is made up of stainless steel.
- The door holder is in a round shape.



hardwarelaarmas@gmail.com

www.laarmas.com

